

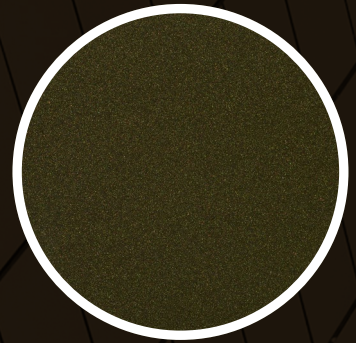
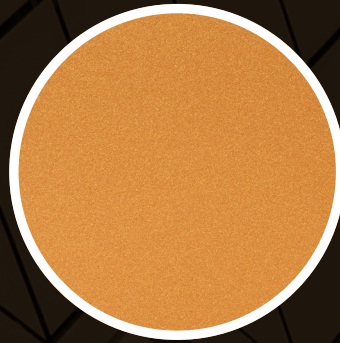
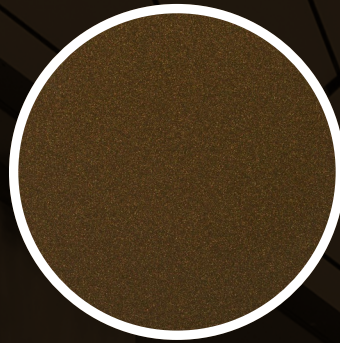
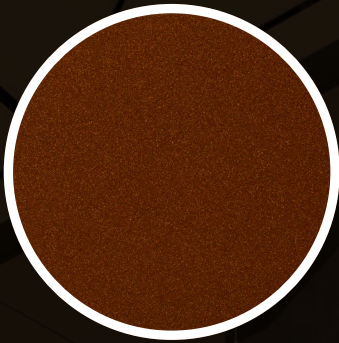
FLUROPON® EFFECTS

RUSTICA

COIL COATING SYSTEM

Inspired by nature. Engineered by Valspar.

Introducing Fluropon Effects Rustica — a soothing, nature-inspired palette never before seen in 70% PVDF architectural coatings.



A distinctive palette.

Your next project can showcase natural, polychromatic colors with a rustic, antique look. Rustica contains special effects pigments that create richer, more saturated shades that reflect the natural environment. When used together, they create a natural color palette that's perfect for both rural and urban metal architecture.

Impressive performance.

Available for coil and extrusion applications, Rustica offers a number of unique benefits including:

- Outstanding color and gloss retention
- Extreme weathering performance
- Resists dirt, stains, chalking and fading

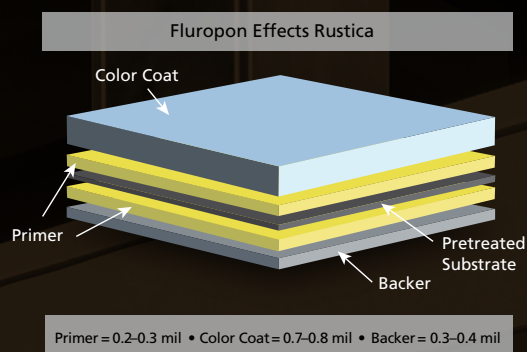
Visit [valsparinspireme.com/fluroponeffects](https://www.valsparinspireme.com/fluroponeffects) to order Rustica samples. Contact us to learn more.

valspar®

Valspar Architectural Coatings | www.valsparinspireme.com | 866-351-6900

70% PVDF COIL COATING SYSTEM

Coating Type	70% polyvinylidene fluoride (PVDF) fluoropolymer resin
Compliance	AAMA 620, AAMA 621 and AAMA 2605-13
Application Method	Shop applied, reverse roll coat
Specular Gloss, ASTM D 5231 ¹ Standard Gloss	15–30 units on a 60-degree meter
Pencil Hardness, ASTM D 3363	HB to 2H
T-Bend, ASTM 4145 ²	1T to 3T ³ , no loss of adhesion
Cross Hatch Adhesion, ASTM D 3359	No loss of adhesion
Reverse Impact, ASTM D 2794 ²	3x ³ metal thickness, no loss of adhesion
Humidity Resistance, ASTM D 2247, 100 Percent Relative Humidity, 2,000 Hours	No field blisters
Salt Spray Resistance 1,000 Hours ASTM B 117 3,000 Hours ASTM B 117	Galvalume or HDG: Creep from scribe no more than 1/16" (2mm), no field blisters Aluminum: Creep from scribe no more than 1/16" (2mm), no field blisters
South Florida Exposure, ASTM D 2244 and D 4214, Method A Color Chalk Film Integrity	No more than 5 delta E Hunter color units at 20 years Rating no less than 8 at 20 years 20 years
Flame Test (ASTM E 84)	Class A coating
Water Immersion ASTM D 870, 500 Hours, 100°F	No loss of adhesion
Graffiti Resistance, ASTM D 6578/D 6578M	Pass



*Certain colors require a base coat.

¹ American Society for Testing Materials.

² Valspar Coatings will generally meet the requirements for most post-painted fabrication processes. However, variations in metal quality, thickness or cleaning/pretreatment applications can lead to diminished flexibility.

³ Valspar Coatings are not designed to bridge cracks in the substrate.

For details and health, safety, and handling information, Material Safety Data Sheets (MSDS) are available at www.valsparcoilextrusion.com.

VALSPAR MAKES NO WARRANTIES, EXPRESSED OR IMPLIED, AND DISCLAIMS ALL IMPLIED WARRANTIES INCLUDING WARRANTIES OF MERCHANTABILITY OR FITNESS FOR A PARTICULAR USE. VALSPAR WILL NOT BE LIABLE FOR ANY SPECIAL, INCIDENTAL OR CONSEQUENTIAL DAMAGES.