



valspar Global Projects 威士伯全球项目

Valspar Global Projects

For more than 200 years, Valspar had led the way in developing high-performance coatings for a wide-range of applications. Today, our global team of technology experts—including chemists, scientists, technical staff and sales consultants—works with architects, builders and fabricators to develop innovative solutions for extraordinary buildings.

At the core of this innovation is Fluropon, now celebrating its 50th anniversary. Developed as a niche product, it has shaped an industry, redefining its sense of the possibilities of color. Today it can be found on monumental buildings around the world—such as those pictured here.

We combine this track record of innovation with a commitment to exceptional customer service, whether that means creating the perfect color, meeting your toughest deadlines or fixing a problem on a moment's notice. We're eager to help you meet some of your greatest challenges while making an unforgettable impression.

If you're interested in learning more about any of these projects, or about Valspar's capabilities, just contact your sales consultant.

威士伯全球项目

200多年来，威士伯专注于开发高性能涂料并将其应用在广泛领域。今天，威士伯全球团队的技术专家们，包括化学师、科学家、技术人员和销售顾问与建筑设计师、建筑商以及制造商们携手共同完成了众多非凡建筑的涂料创新解决方案。

已历经50年洗礼的Fluoropon氟丽朋涂料是解决方案的核心。Fluoropon氟丽朋涂料的诞生顺应市场需求，重塑色彩的意义和可能性如今已拥有了自己的辽阔舞台，活跃在世界各处的标志性建筑上。

威士伯卓越创新的业绩不断验证了实现优质服务的承诺：创造完美色彩，满足客户严苛要求，迅速解决问题。我们渴望配合您攻克各种挑战，为世界留下精彩篇章。请联系威士伯当地销售顾问，以获得更多相关项目和产品信息。

Beijing National Stadium (Bird's Nest)

BEIJING, CHINA

In 2008, Beijing hosted the Summer Olympics and to prepare, China assembled some of the most spectacular and architecturally complex buildings in the world. The crown jewel of these facilities is the Beijing National Stadium, also known as the "Bird's Nest." Designed by the Swiss architecture firm Herzog & de Meuron, the Bird's Nest gets its nickname from the 42,000 tons of exterior steel that is woven together like a nest that rests in front of building's magnificent curtain wall. Valspar's Fluropon Classic and Fluropon Classic II coatings are used to cover metal components within the structure's curtain wall. Both Fluropon Classic and Fluropon Classic II coatings feature enhanced durability and color retention, protecting the brilliance of the color.

北京国家体育场（鸟巢），中国北京

2008年夏季奥运会在中国首都北京成功举办。为了筹办这一盛会，中国建造了一批可称为世界上最壮观、结构最复杂的场馆建筑。北京国家体育场是其中的核心建筑，俗称“鸟巢”。“鸟巢”由瑞士建筑师事务所Herzog & de Meuron担纲设计，拥有由4.2万吨钢铁编织而成的宏伟巨大的幕墙外立面，因编织外壳形似鸟巢而得名。建筑幕墙内的金属结构使用威士伯公司Fluropon Classic和Fluropon Classic II涂料，具有优异的耐久性和保色性，能够持久保持建筑亮丽色泽。



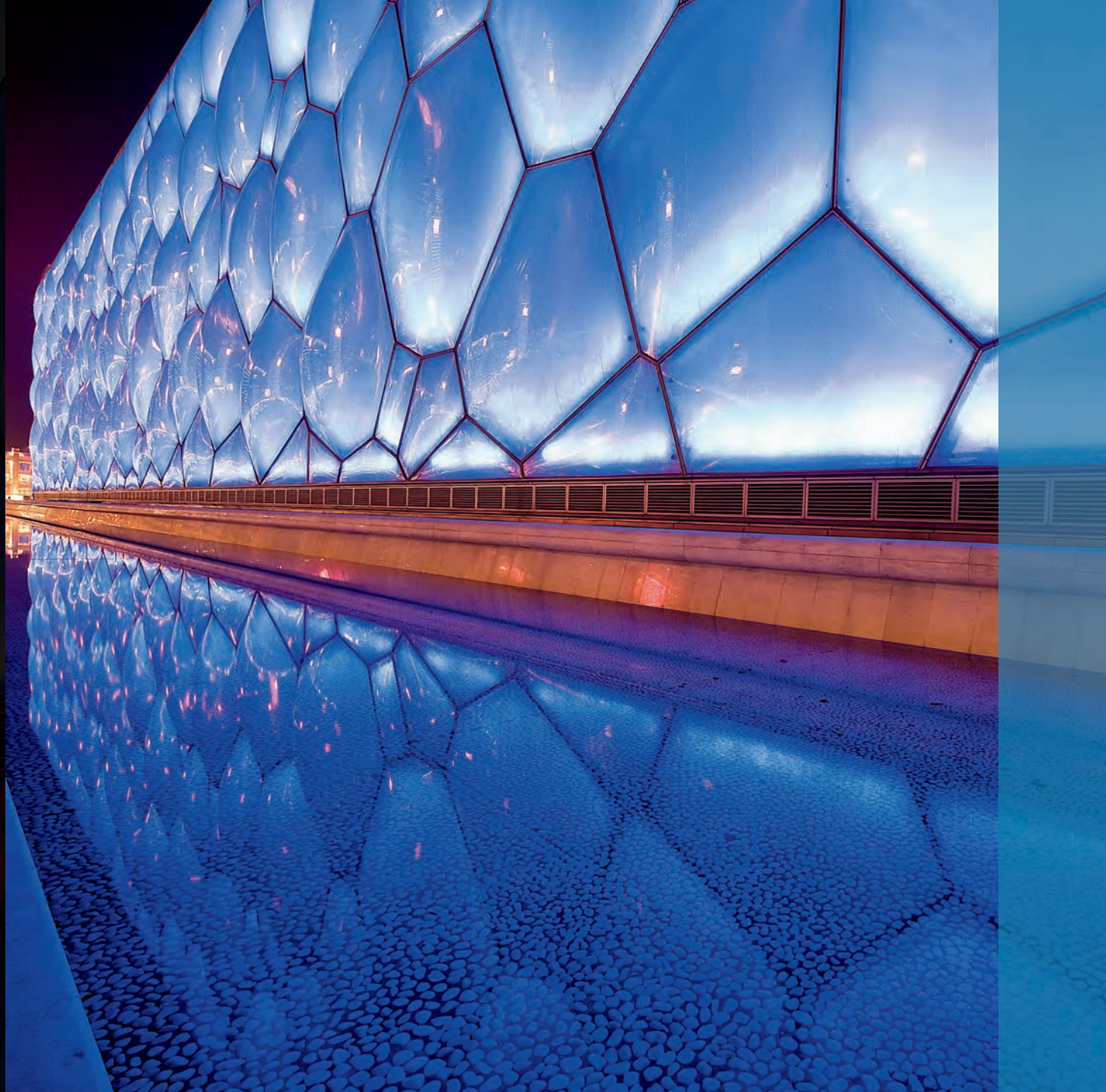
Beijing National Aquatics Center (Water Cube)

BEIJING, CHINA

The Beijing National Aquatics Center, or the “Water Cube,” was designed to host the swimming events for the 2008 Summer Olympics. The Water Cube possesses one of the most innovative designs of the many buildings constructed for the 2008 Olympic games. One hundred thousand square meters of ETFE (Ethylene Tetrafluoroethylene) make up the transparent membrane of bubbles that cover the building’s exterior. Keeping the translucent bubbles in place is a curtain wall coated with Valspar’s Fluropon Classic in Bright Silver and Light Silver. The coating’s high-durability properties and resistance to weathering have kept the building looking good long past the 2008 Summer Olympics.

北京奥林匹克游泳中心（水立方），中国北京

北京奥林匹克游泳中心又称“水立方”，是专为2008年夏季奥运会修建的主游泳馆。2008年北京奥运会的许多建筑都采用了最具创新的设计，水立方就是其中之一。建筑的外立面采用ETFE（乙烯-四氟乙烯共聚物）膜制成的透明气泡膜，覆盖面积达10万平方米。用于固定透明气泡的幕墙均涂覆了亮银色和浅银色威士伯Fluropon Classic金属色涂料。这种涂料具有超高的耐久性，能抵抗各种气候的影响，使水立方自2008年夏季奥运会以来一直保持着当初的完美外观。



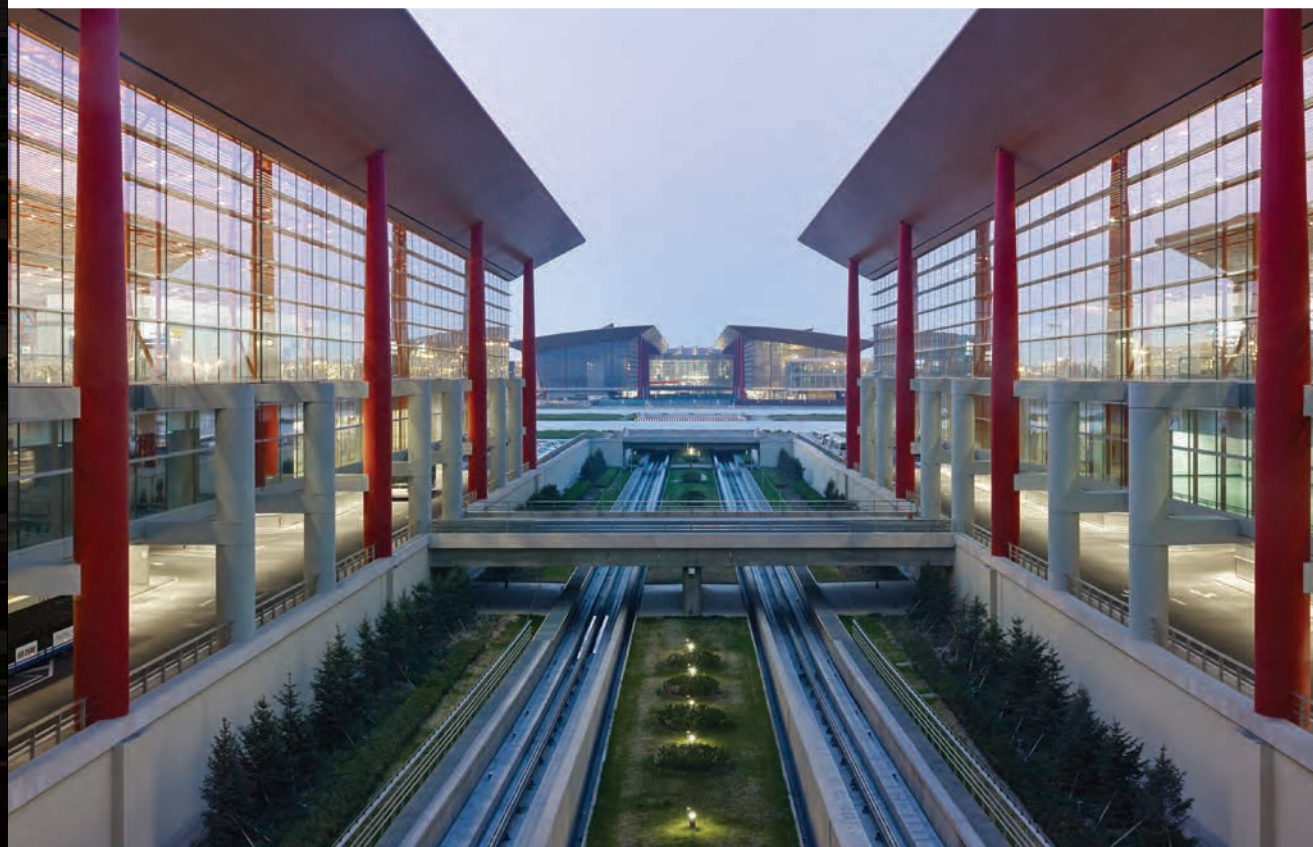
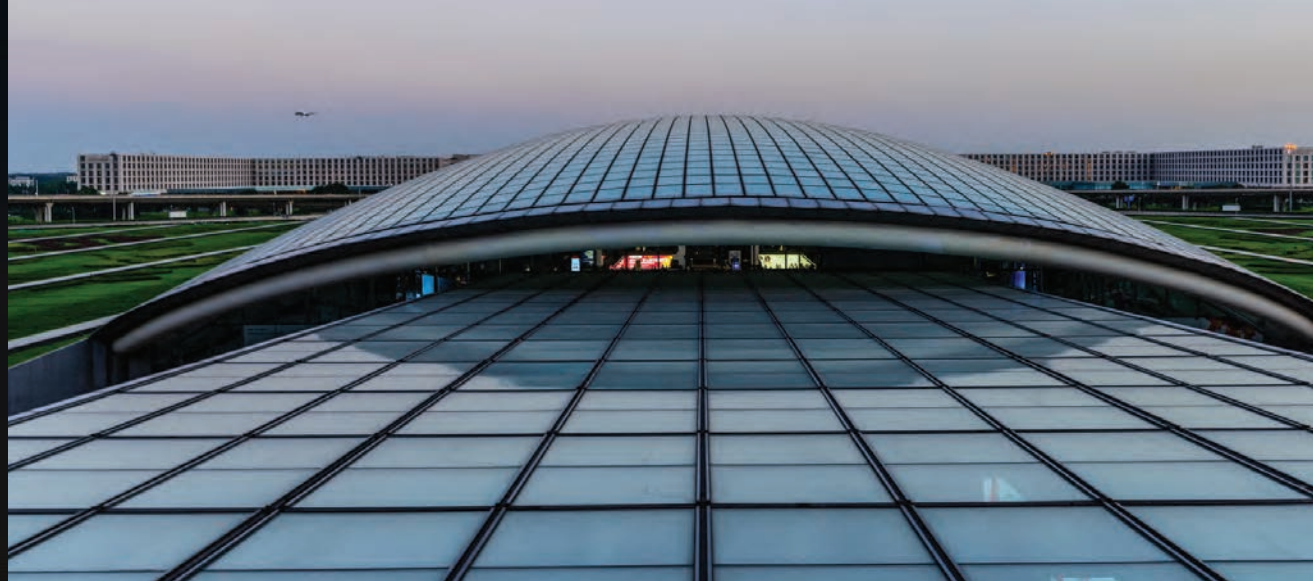
Beijing Capital Airport- Terminal 3

BEIJING, CHINA

Completed in 2007, just in time for the 2008 Olympics, Terminal 3 at the Beijing Capital Airport comprises two terminal buildings. The result of a visionary collaboration with NACO, Netherlands Airport Consultants, and the ARUP engineering group, Terminal 3 is expected to service 60 million passengers in 2015. Massive in scale, Beijing Capital Airport is the second largest airport terminal in the world, and the globe's third largest building by area, covering 986,000 square-meters. From its inception, Terminal 3 was designed to make a cultural statement through spirit and style. The curtain wall and skylight system in Terminal 3 are sheathed in Valspar's Fluropon coating, creating an elegant contrast with its roof that glows at night with red, yellow and orange lights, colors associated with China's heritage.

首都机场T3航站楼, 中国北京

保障了2008年北京奥运会旅客输送的首都机场T3航站楼于2007年竣工, 由两座候机楼组成。T3航站楼由荷兰机场顾问公司(NACO)和英国奥雅纳工程顾问公司(ARUP)共同设计, 2015年的旅客吞吐量可达6千万人次。首都机场的规模巨大, 占地98.6万平方米, 是目前世界第二大机场和全球占地面积第三大的建筑。T3航站楼的设计理念旨在通过空间和风格向世人传播中国文化艺术。T3航站楼的幕墙和天窗系统使用威士伯公司Fluropon氟丽朋涂料, 与夜间散发红、黄和橙色光的“彩霞屋顶”交相辉映, 展现了中国的传统文化。



The Westin Beijing Chaoyang

BEIJING, CHINA

Time and time again, The Westin Beijing Chaoyang has been recognized for its service, amenities and appeal. Frequented by heads of states, world-renowned athletes and the business elite, the 550-room hotel hosts a convenient location as it sits adjacent to Beijing's embassy district. Comprised of glass and metal, the 34-story structure dons a curtain wall accented in Valspar's Fluropon coating. Known for its luster and durability, the Fluropon coating offers lasting resistance to stains and chemical degradation, helping The Westin maintain its prestige for years to come.

北京威斯汀酒店，中国北京

迄今，坐落于北京市朝阳区的威斯汀酒店已多次以服务、设施和外观荣获大奖。酒店共有550间客房，位于在毗邻北京使馆区的黄金地段，位置便利，吸引了众多国家元首、世界知名运动员和商界精英人士经常光顾下榻。酒店高34层，幕墙结构使用威士伯Fluropon氟丽朋涂料。以色彩和耐久著称的Fluropon氟丽朋涂料为酒店提供持久的耐脏污和耐化学降解保护，令其光辉久驻。



Sinopec Scientific Research and Office Building

BEIJING, CHINA

Close to Olympic park and centered in the fashionable Chaoyang District of eastern Beijing, resides the corporate headquarters of Sinopec Group also known as China Petroleum & Chemical Corporation. Built in 1998, the 26-floor Sinopec Scientific Research and Office Building totals 173,000 square meters, creating an imposing image for the state-owned facility. Part of the building's grandiose form stems from its steely exterior – 38,000 square-meters of curtain wall, which contains Valspar's Fluropon coating on the metal architectural components. The strength of the Sinopec Headquarters is reflected both visually and physically by the Fluropon coating, which provides resistance to stains and chemical degradation along with upholding its stunning color without fear of fading or weathering.

中国石化科研及办公楼, 中国北京

中国石化（全称“中国石油化工股份有限公司”）集团总部位于北京东部朝阳区的中心地带，毗邻奥林匹克公园。这座高26层的中国石化科研及办公楼建于1998年，总建筑面积达17.3万平方米，设计庄重大气。外立面包括面积达3.8万平方米的幕墙结构，金属表面使用威士伯Fluropon氟丽朋涂料。Fluropon氟丽朋涂料不仅保护建筑抵御脏污和化学降解，还能长久保持其令人惊叹的色彩，不用担心褪色或老化。



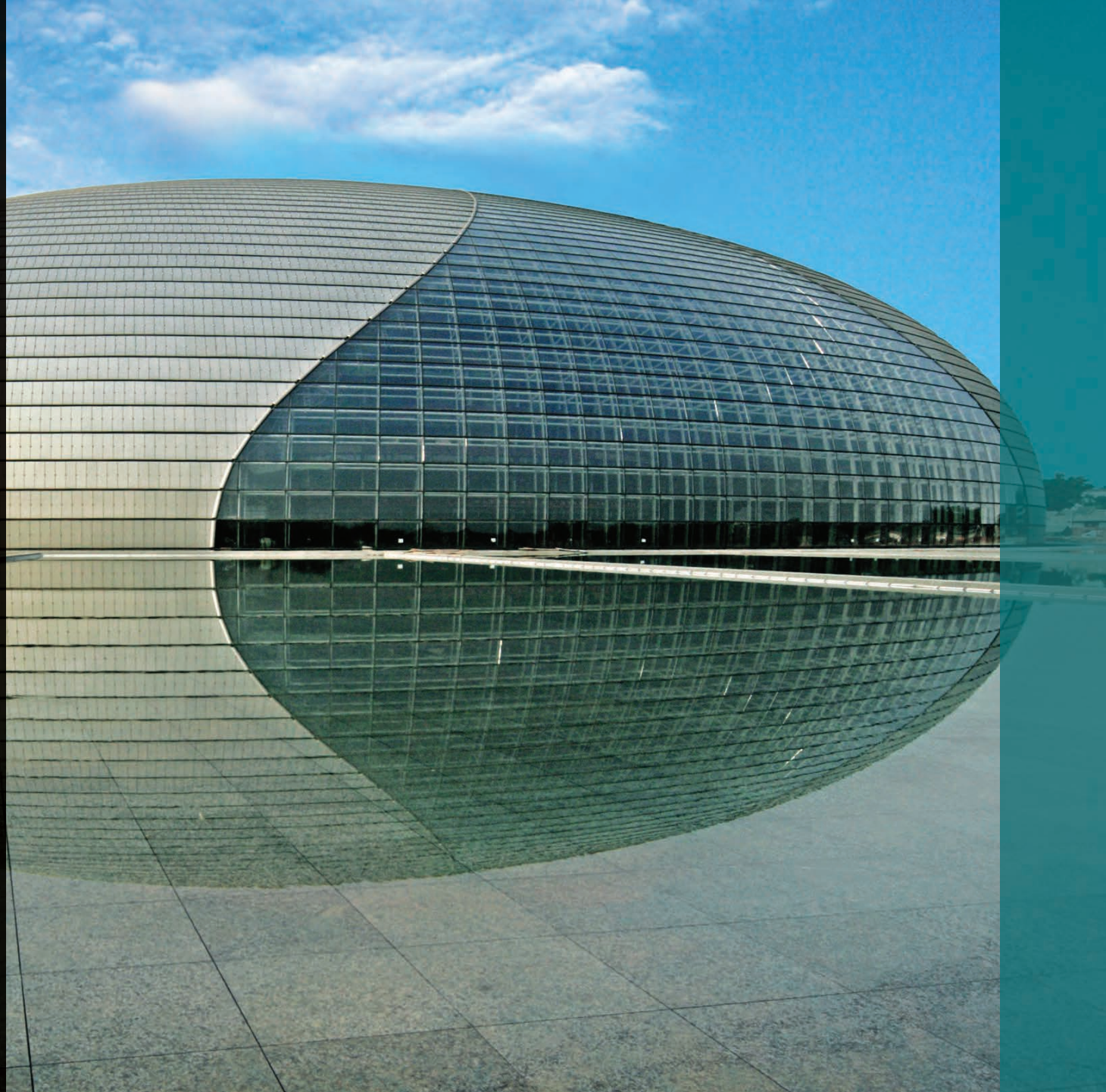
National Centre for the Performing Arts

BEIJING, CHINA

Directly west of Tiananmen Square is the National Centre for the Performing Arts. Encased in an artificial lake surrounded by lawns and gardens, the Centre, also known as “The Egg,” has become a literal and figurative island for the performing arts in Beijing. Designed by French architect Paul Andreu to bring modern design to the city, the National Centre for the Performing Arts is 149,500 square-meters and comprised of both glass and titanium panels. Metal components within the curtain wall are covered in Valspar’s Fluropon coating, adding luster to The Egg’s unrivaled exterior, but also durability including a high resistance to weathering, dirt and stain to protect the massive complex against environmental and chemical degradation.

国家大剧院, 中国北京

国家大剧院位于北京市天安门广场正西边，又称“鸟蛋”。建筑外围环绕着人工湖，湖的四周为大片的草坪和花园，是北京城内名副其实的“艺术岛”。国家大剧院由德国著名建筑师保罗·安德鲁主创，为北京这座历史厚重的城市增添现代设计元素。整座建筑面积为14.95万平方米，由玻璃和钛金属板构成。其中幕墙内的金属结构均使用威士伯公司 Fluropon 氟丽朋涂料，不仅为“鸟蛋”那无与伦比的外观增添了光泽，其优异的耐久性、耐候性和耐脏污性能还保护这座巨大的综合体免受环境影响始终熠熠生辉。



West Changchun Railway Station

CHANGCHUN, CHINA

The West Changchun Railway Station is impressive not only for its monumental form, but for its sophisticated integrated technology as well. After opening to the public, it showcased the world's first alpine, high-speed rail line whose route travels through China's three northeastern provinces. Greatly reducing time between major cities, the bullet trains can operate in temperatures from minus 40 degrees Celsius to 40 degrees Celsius above zero. Like the bullet trains, Fluropon, Valspar's 70% PVDF highly durable architectural coating also can withstand extreme temperature fluctuations while supplying a dose of refined beauty. For the West Changchun Railway Station, Valspar's Fluropon coating was applied to the exterior's metal building components, providing long-lasting color retention and extreme weathering performance.

长春西客站，中国长春

长春西客站因其庄严大气的外观和先进的集成技术吸引人们的视线。在对公众开放之后，它向世人展示了纵贯中国东北三省的世界首条高寒地区高速铁路，其运营的高速列车能在零下40摄氏度到40摄氏度的温度范围内正常运行，大大缩短了东北主要城市之间的行驶时间。和高速列车一样，含70% PVDF的威士伯Fluropon氟丽朋涂料也能承受极端的温度波动，为建筑带来精致、美艳的外观。在长春西客站项目上，威士伯公司Fluropon氟丽朋涂料被使用在建筑外墙的金属结构上，以便提供持久的保色性，帮助建筑抵抗当地极端的气候环境。



Shanghai Tower

PUDONG, SHANGHAI, CHINA

The Shanghai Tower, standing 2,073-feet tall, is an elegant twisting form comprising of a cylinder within a cylinder that allows for high-energy efficiency and increased sustainability. The \$3 billion project, designed by architecture firm Gensler with Chinese architect Jun Xia, provides 360-degree views of the city to up to 30,000 visitors a day. Structurally, it comprises nine cylindrical buildings or zones in a stacked configuration, with each featuring gardens, retail space, meeting spots and cafés. Enhancing its brilliant profile, Valspar's architectural coating Fluropon Classic in Silver to the metal components within the twisting curtain wall.

上海中心，中国上海浦东

上海中心高630米，采用优雅的旋钮造型，由一内一外两个圆柱构成，该结构提高能效，增加了建筑的可持续性。整个项目耗资30亿美元，由建筑公司Gensler和中国建筑师夏军主设，能够360度全方位地俯瞰城市美景，每日游客多达30000人次。在建筑结构上，大厦由九个圆柱形建筑相互叠加构成，每个区都设有自己的花园、商场、会议空间和咖啡馆。大厦幕墙的部分金属结构使用银色威士伯Fluropon Classic涂料。



Lujiazui Tangdong Headquarters

SHANGHAI, CHINA

Located in the business district of Pudong, Shanghai, the Lujiazui Tangdong Headquarters is comprised of five regal buildings that form a formidable skyline. The 445,000 square-meter complex is constructed with a mix of stone and metal. The metal architectural components within the curtain wall of Tangdong Headquarters were coated with Valspar's Fluropon in White Grey, and Fluropon Classic in Grey Silver, Bright Silver, Bright Grey Silver, and Medium Grey, providing the complex with a beautiful, yet powerful radiance. Also known for its outstanding durability and resistance to fading and chalking, selecting Fluropon was an easy decision for the developers to make.

陆家嘴塘东总部基地，中国上海

陆家嘴塘东总部基地项目地处上海市浦东商业区，由五栋高标准的豪华建筑组成。该综合体总建筑规模为44.5万平方米，由石头和金属材料组建。塘东总部基地幕墙内的金属建筑结构使用白灰色威士伯Fluropon氟丽朋涂料以及灰银色、亮银色、亮灰银色和中灰色Valspar Fluropon Classic金属系涂料，给整个建筑体蒙上一层迷人但又庄严威武的光辉。Fluropon氟丽朋涂料同样以优异的耐久性、耐褪色性和抗粉化性著称，Fluropon是项目开发最便捷的选择。

Pudong Financial Center

SHANGHAI, CHINA

Constructed atop Shanghai's economic and cultural foundation, the Lujiazui central financial district of Shanghai Pudong New Area, is China's first national financial zone. Directly in the center of that zone is a plot of land that is the future home of the Pudong Financial Center. The Pudong Financial Center will be a mixed-use development for business offices, commercial enterprises, and leisure and dining services. Currently rendered as two towers composed of glass and steel, Valspar's Fluropon coating in Mica White and Fluropon Classic coating in Grey Silver have been commissioned to adorn the metal architectural components of the buildings' exterior curtain wall.

浦东金融广场，中国上海

上海市浦东新区陆家嘴金融中心区建立在上海的经济和文化基础之上，是中国首个国家级金融开发区。浦东金融广场就建立在这个金融区的核心地段上。浦东金融广场将成为集金融办公、商业企业以及休闲餐饮服务于一体的多用途物业。目前已呈现出来的是两座由玻璃和钢结构构成的塔楼，并且已确定在建筑外部幕墙的金属建筑结构上涂覆云母白色的Valspar Fluropon涂料和灰银色的Valspar Fluropon Classic涂料。

Oriental Financial Center (OFC)

SHANGHAI, CHINA

Shanghai's Oriental Financial Center is situated in Lujiazui, a locality in the Pudong financial district on the east side of the Huangpu River. Defined by its rectangular, inverted wedge design - OFC cuts a powerful profile in the Pudong architectural hierarchy. Its curtain wall façade of energy-efficient glazing and paneling is both environmentally responsible and beautiful. To guarantee the longevity of OFC's unique design, the structure's exterior panels and additional metal architectural elements were clad in Valspar's Fluropon coating in Gray and Fluropon Classic coating in Diamond Silver. Valspar's Fluropon was the premier choice for architectural coating as it offers outstanding durability coupled with high color retention and resistance to fading and chalking.

东方汇经中心(OFC), 中国上海

上海东方汇经中心坐落在黄浦江东畔浦东新区陆家嘴金融中心。东方汇经中心外观呈矩形，采用独特的倒楔形设计，在浦东新区的建筑群里备受关注。整座建筑的幕墙立面均使用高能效的玻璃板和嵌板，既环保又美观。为保证东方汇金中心的独特设计能够长久美观，外墙板和其他金属建筑结构上选择使用灰色威士伯Fluropon氟丽朋涂料和钻石银色Fluropon Classic金属系涂料。威士伯Fluropon氟丽朋涂料因其优异的耐久性和超高的保色、耐褪色和耐粉化性能，成为建筑设计的首选。



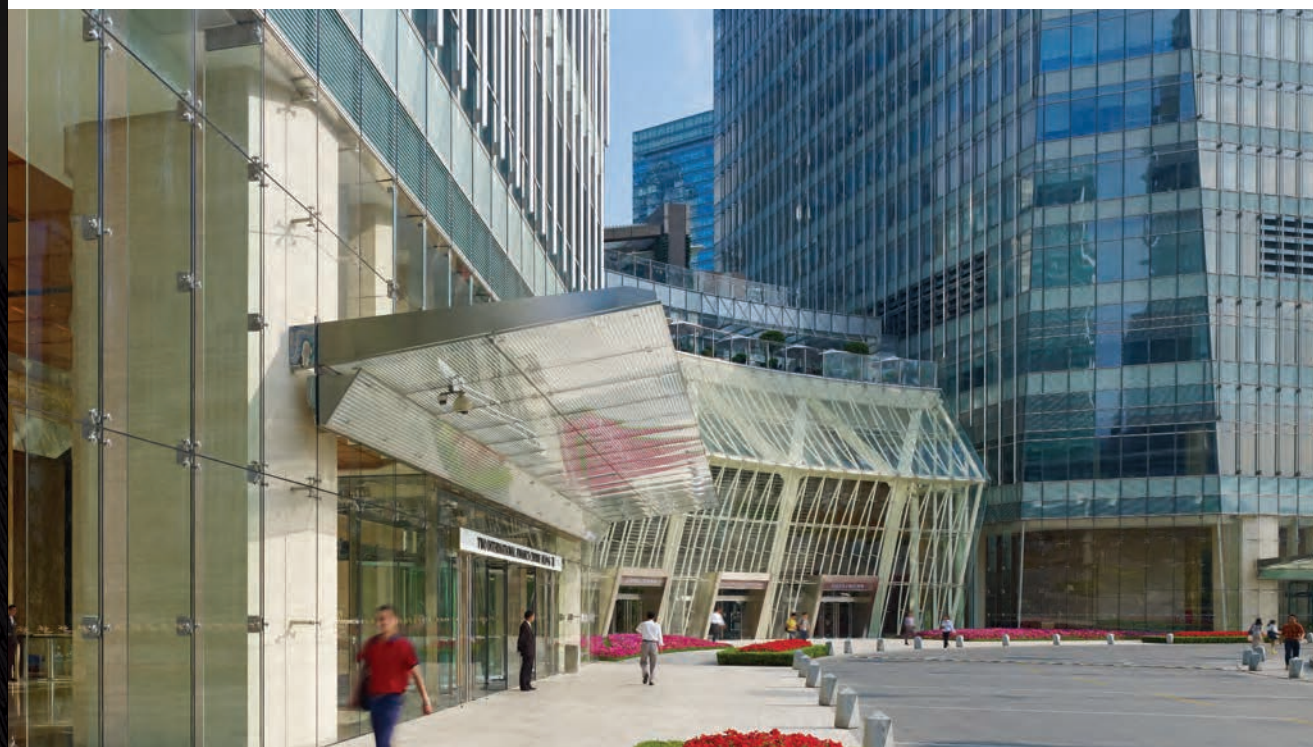
Shanghai International Finance Centre

SHANGHAI, CHINA

Built in the heart of Shanghai's bustling financial district of Lujiazui, the Shanghai International Finance Centre (IFC) is composed primarily of two colossal towers. Completed in 2011 by Sun Hung Kai Properties and designed by Pelli Clarke Pelli Architects, the Shanghai IFC towers are an example of elegant architectural design. A main point of focus for the project was the use of environmentally conscious construction practices, including the installation of curtain wall that includes metal components coated in Valspar's Fluropon coating. Known for its durability and weathering resistance properties, the long-lasting 70% PVDF coating adds brilliance to the sophisticated design of the Shanghai International Finance Centre.

上海国金中心，中国上海

上海国金中心(IFC)位于繁华的陆家嘴金融贸易区的中心地带，主要由两座高层塔楼组成。IFC由佩利建筑事务所(Pelli Clarke Pelli Architects)规划设计，香港新鸿基地产发展有限公司开发建设，于2011年建成，堪称优雅建筑设计的典范。该项目最引人注目的一大亮点是，包括幕墙的安装在内所有建筑过程均严格遵守环保原则，幕墙内金属结构使用Valspar威士伯Fluropon氟丽朋涂料。氟丽朋涂料含70%的PVDF树脂，以优异的耐久和耐候性著称，为上海国金中心经典设计增添了光彩。



Shanghai Diamond Exchange Center

SHANGHAI, CHINA

The two towering offices that make up the Shanghai Diamond Exchange Center are conjoined by a breathtaking glass atrium designed to usher natural light into every office of the building. The Diamond Exchange Center is 535,500 square-foot with one tower designated to the China Diamond Exchange, while the other houses a myriad of other high profile tenants. To achieve the dynamic contrast between office and atrium, Goettsch Partners installed aluminum paneling to the exterior of the towers and coated them in Valspar's Fluropon coating. Not only does Fluropon provide both towers with a stunning appearance, it also protects the buildings from the elements.

上海钻石大厦, 中国上海

上海钻石大厦由两座办公大楼组成，中间连接以玻璃中庭，气度非凡令人惊叹，该中庭的独特设计可将自然光引入大楼的每一间办公室。大厦总建筑面积为5万平方米，中国钻石交易中心落户其中一座大楼，另一座为高端商务用途。为了实现办公楼和中庭的动态辉映，Goettsch Partners建筑设计事务所选择了在办公楼外墙安装使用威士伯Fluropon氟丽朋涂料的铝板。Fluropon氟丽朋涂料不仅为钻石大厦提供了华丽的外观，还可保护其不受各种外界因素的伤害。



Shanghai Hongqiao Railway Station II

SHANGHAI, CHINA

The Shanghai Hongqiao Railway Station II is Asia's largest railway station and was designed specifically to serve high-speed bullet trains. Requiring more than 80,000 tons of steel for its construction, the station's cavernous waiting hall area is more than 10,000 square-meters and has the capacity to handle 10,000 passengers simultaneously. Hongqiao Station was completed on July 1, 2010 and across the station's labyrinth of structural steel elements, Valspar's Fluropon coating was called upon as a durable and weather resistance architectural coating option. The acclaimed 70% PVDF coating is revered for its protective properties and its ability to withstand dirt and stains, even within high-traffic places such as the Hongqiao Station.

虹桥火车站二期, 中国上海

虹桥火车站二期（磁悬浮/高铁）是亚洲最大的火车站，是专门输送高速子弹头列车旅客的枢纽。火车站的总用钢量在8万吨以上，宽敞的候车大厅面积超过1万平方米，最高可容纳1万名旅客同时候车。虹桥火车站于2010年7月1日竣工，其钢结构设计复杂，为了使建筑结构持久耐用，项目选择了威士伯公司Fluropon氟丽朋涂料。该涂料含70%的PVDF树脂，在业内广受赞誉和好评，能够为建筑提供有效的保护，具有极强的耐脏污能力，即使在虹桥火车站这种高人流量的地方也不例外。



Citigroup Tower

SHANGHAI, CHINA

Looming across the waterfront of the Huangpu River in the financial heart of Shanghai, the Citigroup Tower stands as a modern landmark among the Lujiazui skyline. Completed in 2005 by Shanghai Bading Development Company, the 118,000 square-meter, 42-story skyscraper features one of the world's largest LED plasma screen on its western wall. Beneath the LED curtain, casing the rest of the tower's exterior, is a curtain wall system with extruded metal accents coated in a custom color, Citibank White Silver, developed by Valspar. Using Valspar's Fluropon Classic II, the coating protects the building's exterior with its high resistance to weathering and deflection of ultraviolet rays.

花旗银行大厦, 中国上海

花旗银行大厦矗立于上海黄浦江畔的金融中心，是陆家嘴金融贸易区的现代建筑地标之一。该项目由上海巴鼎房地产发展有限公司开发兴建，于2005年竣工，建筑面积达11.8万平方米，共42层，其西墙表面安装有目前世界上最大的LED等离子显示屏。LED幕墙下方是一个包覆大厦剩余外墙表面的幕墙系统，系统中的型材金属结构均涂覆以威士伯专门开发的白银色涂料。这一Fluropon Classic II珠光色涂料具有极高的耐候性和抗紫外线性能，能够为大厦外墙提供强大的保护作用。



Shanghai International Circuit

SHANGHAI, CHINA

Designed by Hermann Tilke, the Shanghai International Circuit was constructed on the outskirts of the city and hosted its first Formula 1 race in September 2004. At 3.388 miles in length with sixteen turns, the Circuit boasts a signature Tilke track feature: a long back straightaway followed by a hairpin turn. The monumental two-tiered grandstand, with its deep overhang and futuristic ovoid connecting bridge, are clad with Valspar's durable but elegant Fluropon coating. Using a spray-application method, the extrusion coating applied to the aluminum building components is formulated to meet the industry's highest standards and continually exceeds performance needs while maintaining a consistent color.

上海国际赛车场, 中国上海

上海国际赛车场位于上海市郊，由著名赛道设计师赫曼·蒂尔克设计，2004年竣工，同年9月举办了首个一级方程式(F1)赛车比赛。赛道全长5.45千米，共设有16个弯道，充分体现了蒂尔克标志性的设计风格：一条长直道后便是充满挑战的急转弯。赛车场的主看台分为上下两层，连同其悬挑深远的屋顶和未来感十足的蛋形天桥长廊均使用了性能持久且色泽优雅的威士伯Fluropon氟丽朋涂料。通过喷涂法涂覆在铝制结构上的氟丽朋型材涂料符合行业的最高标准，在满足性能需求的同时，持久保护建筑的出色外观色彩。



Azia Center

LUJIAZUI, PUDONG DISTRICT, SHANGHAI, CHINA

Designed by Kohn Pedersen Fox Associates, the Azia Center has had a distinguished presence among the many buildings establishing the exotic skyline of Pudong. At 32-stories, Azia's elegance has made it a coveted address for many in the financial industry. Its rectangular design features a blue-green glass curtain wall construction. Complementing and defining Azia's colorful curtain wall are mullions and other architectural details clad in Valspar's premier architectural coating, Fluropon Classic II in Bright Silver. Offering outstanding protection against the elements and boasting a formula that uploads its true color, Fluropon Classic II ensures that Azia will have a vital and beautiful future.

汇亚大厦, 中国上海市浦东新区陆家嘴

汇亚大厦由KPF建筑事务所设计, 拥有傲视同侪的挺拔外观, 是上海浦东新区内一道独特的风景。大厦共32层, 高雅的氛围使其成为诸多金融行业人士理想的办公场所。大厦整体采用矩形设计, 湖绿色的玻璃幕墙结构是其一大亮点。除此之外, 汇亚大厦还使用了众多垂直立式窗棂和其他建筑细部来演绎其品质, 作为包覆和支承幕墙的结构, 这些垂直立式窗棂和建筑细部均涂覆了亮银色的威士伯 Fluropon Classic II 建筑涂料。Fluropon Classic II 采用了能真实再现色彩的配方, 可为汇亚大厦提供强大的保护作用, 确保大厦永久留驻今日辉煌。



You You Grand Sheraton International Plaza

SHANGHAI, CHINA

When completed in 2007, the You You Sheraton International Plaza was the next remarkable addition to the Pudong District. Designed by B+H architects, the You You Sheraton International Plaza is integral to the New Shanghai Commercial City, an area that features shopping, entertainment and dining. The You You Plaza is memorable for its austere, unconventional ovoid-shaped tower, a provocative, almost bullet-like form perched on a colonnade of slender columns. Defining its elegant, gently curving curtain wall are beautifully scaled mullions that are sheathed in Valspar's Fluropon architectural coating that is revered for its extreme weathering performance.

由由国际广场及酒店，中国上海

由由国际广场及酒店于2007年竣工，是上海浦东新区内又一座标志性建筑。作为新上海商业中心的一部分，由B+H建筑师事务所设计的由由国际广场及酒店为这个集购物、娱乐和餐饮等功能为一体的城市商业中心再添亮丽风景。由由广场的塔楼为不规则椭圆形圆柱，外观简约，下侧为细长柱廊，上部形状类似弹头，直指蓝天。巨大的幕墙随着结构缓缓展开，姿态优雅。幕墙结构使用以极端耐候性能著称的威士伯Fluropon氟丽朋涂料。

Nanning Logan Century 1 Tower

NANNING, CHINA

With a scheduled completion date of 2017, the 82-story Logan Century 1 Tower is designed by Dennis Lau & Ng Chun Man Architects and Engineers (H.K.) Ltd. The Logan Century 1 Tower will be the tallest building in the Guangxi Zhuang Autonomous Region in South Central China. Used within the construction of the looming curtain wall, metal building components will be clad in Valspar's Fluropon Classic II architectural coating adding radiance to the magnificent exterior. The Fluropon Classic II coating in Silver will offer the Logan Century 1 Tower outstanding protection against the elements and weathering, and will ward off dirt and stains to ensure the building can uphold its pearlescent look.

南宁龙光世纪大厦，中国南宁

南宁龙光世纪大厦共82层，由刘荣广伍振民建筑师事务所（香港）担纲设计，预计2017年竣工。建成后，南宁龙光世纪大厦将是中国中南地区广西壮族自治区的第一高楼。为了给大厦壮丽的外观增辉添彩，幕墙结构中的金属建筑构件使用威士伯Fluropon Classic II珠光色系涂料。银色的Fluropon Classic II涂料不仅能保护南宁龙光世纪大厦不受气候和其他环境因素侵蚀，还能有效防止灰尘和污渍，确保大厦始终光彩耀目。

Guangzhou Baiyun International Airport

GUANGZHOU, GUANGDONG PROVINCE, SOUTHERN CHINA

Formerly known as the Canton Airport, the Guangzhou Baiyun International Airport is undergoing a multi-phase expansion plan with a projected completion date of 2018. Upon completion, it is estimated that Guangzhou Baiyun will handle 80 million passengers and 2.5 million tons of cargo per year. Created by Parsons Infrastructure & Technology Group Inc., it combines innovative design with advanced materials to convey, metaphorically, that it is a bridge connecting to the entire world. A first-class facility, Guangzhou Baiyun's steel frame construction, soaring glass curtain walls and glass concourse skylights, coated with Valspar's Fluropon coating, allow natural light to permeate the huge space.

广州白云机场, 中国广东省广州市

广州白云机场原名广州机场, 目前正在进行多阶段的扩建, 扩建项目预计将于2018年完工。扩建后, 广州白云机场每年能够承载8千万人次旅客、满足250万吨货运吞吐量。扩建项目采用了派森公司(Parsons Infrastructure & Technology Group Inc.)的设计方案, 将创新设计与先进材料进行了完美结合, 称为连接广州与整个世界的桥梁。作为世界一流的建筑, 白云机场使用威士伯Fluropon氟丽朋涂料的钢框架结构、翱翔蓝天的幕墙以及大厅的玻璃天窗均采用通透的设计, 让自然光充盈这个巨大空间的每一角落。



Canton Tower

GUANGZHOU, GUANGDON, CHINA

With its striking twisted hourglass form, the Canton Tower ranks as the fifth-tallest freestanding structure in the world. Information Based Architecture and Arup engineers designed the tower, with a grand opening in 2010 to celebrate the 16th Asian Games hosted in Guangzhou. The Canton Tower's complex lattice structure was coated in Valspar's Fluropon, a 70% PVDF architectural coating, in Gray. Ranking as a premiere architectural coating, Valspar's Fluropon both protects Canton Tower against the elements such chemical degradation and gives it a finish of distinction that will not fade or weather.

广州新电视塔, 中国广东省广州市

广州新电视塔（又名“广州塔”）拥有扭曲的沙漏状外形，是世界上第五高的独立建筑物。广州塔由阿姆斯特丹的信基建筑事务所和英国奥雅纳工程顾问公司合作设计，于2010年正式对公众开放，以庆祝当时在广州举办的第16届亚运会。广州新电视塔采用了复杂的网格结构，并涂覆以灰色的威士伯Fluropon氟丽朋涂料，一种含70% PVDF的建筑涂料。作为诸多重大项目首选的涂料，威士伯的Fluropon氟丽朋涂料既可以保护广州新电视塔免受化学降解等因素的影响，又能确保电视塔外观不褪色，不受气候侵蚀，恒久如新。



Tencent Tower

SHENZHEN, CHINA

The Tencent Tower is an unorthodox, one-of-a-kind design. The Internet giant's corporate research center is structured on a "vertical campus" model that comprises two, flat rectangular towers that are linked together by three enclosed bridges that wrap around the towers. Maximizing both aesthetic appeal and resistance to environmental damage, metal building components on the exterior of the tower have been coated with Valspar's Fluropon Classic II in Light Bronze, Pearl Clear and Dark Silver, offering a pearlescent sheen. Other exterior metal elements have been sheathed in Valspar's Fluropon in a winning combination of Grey and White.

腾讯滨海大厦，中国深圳

腾讯滨海大厦在设计上打破传统、独树一帜。作为互联网巨头腾讯公司的研发基地，腾讯滨海大厦由两座扁平的方形塔楼组成，通过三条封闭式桥梁层实现塔楼间互联。塔楼外墙金属建筑结构采用浅铜色、珍珠白色和深银色威士伯Fluropon Classic II涂料，给建筑带来了珠光色的柔和光泽，最大化地满足了建筑的美学表现和抗环境侵蚀的功能诉求。另外，其他外部金属构件均涂覆有灰色和白色组合的威士伯Fluropon氟丽朋涂料。

Baidu International Towers

SHENZHEN, CHINA

A recent addition to Shenzhen's rapidly expanding cityscape is the striking double tower complex known as Baidu International Towers. With construction wrapping up in 2015, the towers rise 590 feet and 525 feet in height, and are the professional home to more than 10,000 employees. The two towers face off over an open central plaza. Valspar's Fluropon Classic coatings were applied to metal building components including the pair of curtain walls constructed on adjacent towers. Working together, the Fluropon Classic coatings in Bright Sparkle Silver, Sparkle Silver, Silvery Grey and Silver give the building a sheen that distinguish its place within the Shenzhen skyline.

深圳百度大厦，中国深圳

引人注目的双塔综合体“深圳百度大厦”为深圳的快速建设再添新动力。大厦于2015年竣工，双塔分别高180米和160米，可容纳超过10000名员工。两座塔楼相对而立，对中央的开放式广场形成围合之势。大厦的金属建筑构件使用威士伯公司Fluropon Classic金属系列涂料，包括毗连两幢塔楼的两道幕墙。大厦设计为多种颜色组合，包括亮闪银、闪银色、银灰色和银色Fluropon Classic金属色系，交错的颜色使其成为深圳市又一地标性建筑。

Shenzhen MixC

SHENZHEN, CHINA

As fashionable as it is elegant, the MixC shopping mall in Shenzhen caters to the discerning clientele with its roster of luxury brand stores. The MixC complex also features Shenzhen's largest cinema, an Olympic-size ice-skating rink, and an array of food and beverage options ranging from food courts to fine dining. And above MixC's top floor, one can reside at the luxury Park Lane Manor apartments or spend a weekend at the Grand Hyatt Hotel. Encompassing more than 200,000 square-meters of shops, concourses and activities, MixC's expansive exterior features a radiant curtain wall design. Metal building components within the exterior design have been clad in Valspar's Fluropon 70% PDVF coating, the superlative choice in architectural coating to imbue the immense structure with a unified design presence.

深圳华润大厦万象城，中国深圳

深圳华润万象城融汇时尚高端与优雅大气，凭借诸多全球著名品牌门店吸引了大量眼光独到的顾客群。作为综合性商业建筑群，万象城囊括了深圳最大的电影院、奥林匹克水准规格的室内溜冰场以及从美食广场到高级餐厅的系列餐饮娱乐设施。逛完万象城之后，您可以在豪华的幸福里公寓驻留片刻，也可以在君悦酒店里度过一个慵懒的周末。万象城的总面积超20万平方米，集购物、休闲和各种活动空间为一体，巨大的幕墙外观光泽璀璨。幕墙内的金属建筑结构使用Valspar威士伯Fluropon氟丽朋70% PDVF涂料。氟丽朋涂料是涂覆面积巨大、要求统一设计外观项目的理想之选。



Hong Kong Convention and Exhibition Center

HONG KONG, CHINA

In a city known for its dynamic skyline, the world class Hong Kong Convention and Exhibition Center is an architectural icon revered by residents and visitors alike. Valspar's coatings add luminous beauty to the structure. The project uses both Fluropon Classic II in gleaming Mica Silver and Fluropon in Mica Milk White. The HKCEC pops in the sunlight due to the vivid pearlescent finish of the mica coatings. Valspar's Fluropon Classic II coating uses a two-coat system created of 70% PVDF fluoropolymer that does not rely on metal flakes for its metallic appearance.

香港会展中心, 中国香港

香港是一座充满活力的城市。在这里，世界级的香港会展中心可以称为建筑领域的典范之作，广受当地居民和游客称颂。为了充分发挥建筑的美丽光泽，项目选用威士伯涂料，包括闪烁温润光彩的云母银色Fluropon Classic II珠光色系以及云母乳白色Fluropon威士伯涂料。这类云母涂料可形成鲜艳生动的珠光涂层表面，使香港会展中心在阳光的照射下熠熠生辉。威士伯Fluropon Classic II珠光色涂料含70%的PVDF，为两涂体系。可以在不添加金属色粉的情况下使涂层呈现出金属质感。



Macau Galaxy City II

MACAU, CHINA

A new addition to Macau's expanding gaming district in Cotai, is Galaxy City II, which opened in May 2015. Galaxy City projects a golden aura both in the actual hue of its buildings and also its array of seductive guest offerings. The allure of the resort's three tall buildings, sited around a multi-purpose plaza, lies in its fanciful design punctuated by ornate rooflines and architectural details. Heightening the presence of Galaxy City is the application of Valspar's Fluropon coating on the building's exterior metal surfaces in Bronze. The coating will protect the buildings from environmental damage far into the future with a shimmering effect.

银河二期，中国澳门

银河城二期工程是对澳门路氹城内博彩商区的扩充，于2015年5月对公众开放。无论银河城项目建筑外观，还是内部高档华丽的服务设施，都环绕着金色的光环。三座高楼组成的度假酒店围绕着多功能广场而立，梦幻般的设计以及华丽的屋顶和建筑细节吸引着极高的人气，建筑外墙金属表面使用古铜色威士伯Fluropon氟丽朋涂料更添建筑光芒。氟丽朋涂料将保护建筑不受环境因素的侵蚀，时光更替仍然光芒依旧。



Macau City of Dreams III

MACAU, CHINA

The well-established City of Dreams resort and gaming complex in Macau is entering phase III with a new hotel tower slated to open in 2017. Set in the heart of the Cotai district, this fifth hotel tower promises to be the most eye-catching of the complex. An exposed exoskeleton mesh structure weaves consciously around the construction. Coated in Valspar's Fluropon in Black, the intriguing structure adds stability and appeal, allowing designers to increase interior space and layout. The Fluropon coating, known for durability and weathering resistance, will allow the hotel to shine and stand out along the Cotai skyline for years to come.

澳门梦幻城三期, 中国澳门

集度假与博彩功能为一体的澳门梦幻城现已进入第三期建设, 将新建一栋酒店大楼, 预计于2017年落成开放。该酒店地处路氹城中心地带, 是梦幻城第五栋酒店塔楼, 有望成为该综合体内最吸引眼球的建筑。整栋塔楼的结构非常独特, 仿佛被裸露的网状结构骨架有意识地缠绕覆盖。这一有趣的结构涂覆以黑色Valspar Fluropon涂料, 为这一迷人的建筑增添稳定性和吸引力, 并包容了设计师对室内空间和布局的无尽想象。Fluropon涂料以耐久性和耐候性著称, 可确保酒店大楼在未来多年后依然是路氹城的闪耀风景。

Macau Studio City

MACAU, CHINA

Macau Studio City, a cinematically themed resort completed in 2015, was inspired by Batman's hometown, Gotham City. Studio City's most daring calling card is the Golden Eye, Asia's highest Ferris Wheel. Designed in a figure-eight configuration, it was inspired by two asteroids shooting through Gotham City. Enhancing the exterior surfaces of Studio City's glistening profile and drawing attention to its bold features, Valspar's Fluropon Classic coatings were applied in Black Silver, Champagne, Silvery Grey and Bronze. Additionally, Valspar's Fluropon coatings were applied in Creamy White and Grey. The six color combination showcases Valspar's color innovation and ability to create nearly any color imaginable to meet project needs.

新濠影汇 (新丽门), 中国澳门

新濠影汇的灵感源自蝙蝠侠的故乡高谭市, 是一个以影视为主题的综合度假村, 落成于2015年, 亚洲最高的摩天轮-黄金眼让胆大的游客趋之若鹜。摩天轮整体呈“8”字造型, 设计灵感源于贯穿高谭市天际的探照灯。为了使外观更闪烁, 吸引更多人关注其大胆的设计, 新濠影汇使用了黑银色、香槟色、银灰色和古铜色的威士伯Fluropon Classic金属系涂料以及乳白色和灰色Fluropon 氟丽朋素色系涂料。六色组合展示了威士伯始终不断的色彩创新, 威士伯能够满足不同的项目需求, 发挥想象创造现实。

Macau City of Dreams

MACAU, CHINA

Located in the heart of the Cotai district of Macau, City of Dreams is a grand hotel and casino complex that underscores Macau's reputation as the gaming capital of the world. Unique to the City of Dreams, is the "media façade" that conceptually unites the four hotel towers by synchronized video content across their curtain wall construction. Serving as a rich platform for this digital array of light, each curtain wall has distinctive Bronze accents of Valspar's Fluropon Classic II coating. Fluropon Classic II gives the coated metal building components a vivid metallic finish with a formula that promises excellent color retention.

澳门梦幻城，中国澳门

梦幻城地处澳门路氹城的中心，是容酒店和娱乐场所一体的综合建筑，凸显了澳门作为世界博彩之都的声誉。梦幻城的独特之处在于酒店四栋塔楼均采用“媒体立面”设计理念，在幕墙上播放的视频内容以流动的形式形成连续整体。作为灯光数字阵列的承载平台，每栋幕墙都使用独特古铜色调的威士伯Fluropon Classic II涂料。Fluropon Classic II不仅给金属建筑结构带来了生动的金属光彩，其独特保色配方更能长期保持建筑原有的色泽。



Venetian Macao

COTAI STRIP, MACAU, CHINA

The Venetian Macao, designed by HKS, Inc. and Aedas, is a luxury hotel resort and the world's largest casino spanning 500,000 square feet. Recalling the Venetian Gothic architecture of the famed Palazzo Ducale (Doge's Palace) in its ornate and colonnaded entrance façade, the exterior of the immense complex features a unique curtain wall that utilizes Valspar coatings to draw attention to design features. In a winning combination, the Venetian Macao features a selection of Valspar's high-performing Fluropon coating in Grey and White, and Fluropon Classic II in sparkling pearlescent Pearl Clear, Dark Silver and Light Bronze. Fluropon coatings are widely recognized for their durability properties to create a lasting impression.

澳门威尼斯人, 中国澳门路氹金光大道

澳门威尼斯人豪华度假酒店由HKS, Inc.和Aedas联合设计, 占地46.5万平方米, 是世界上最大的博彩娱乐场。作为大规模综合建筑体, 酒店的入口外立面仿照威尼斯著名的哥特式建筑总督府(道奇宫)设计, 建筑设有柱廊, 异常华美。其外墙安装了独特的幕墙, 并使用了多种威士伯涂料来凸显设计的个性化特征。澳门威尼斯人项目选用威士伯灰色和白色的高性能Fluropon氟丽朋涂料以及珠光白、深银色和浅铜色的Fluropon Classic II珠光色系涂料, 这些颜色相互融合、衬托, 呈现别具特色的风格设计。迄今为止, Fluropon氟丽朋系列涂料已凭借其优异的耐久性获得广泛认可。



Taipei 101 Tower

TAIPEI, CHINA

Designed by C.Y. Lee + Partners, the stepped form of Taipei 101 has become a symbol of Taiwan acknowledging both the past and the future. There are four large discs representing coins mounted on each face of the building where the pedestal meets the tower. Known for its superior protection of metal paneling and building components in monumental structures, Valspar's Fluropon coating is the go-to choice for buildings of distinction around the world. The stately appearance of Taipei 101 is due in part to the use of Valspar's Fluropon coating in Egg Shell White and Crystal. Fluropon is also widely selected for its high color retention due to its two-coat formulation containing 70% PVDF fluoropolymer resin, plus ceramic and other inorganic pigments.

台北101，台湾台北

台北101大楼由李祖原联合建筑师事务所设计，拥有多节式外观，象征着台湾传承历史，拥抱未来。四枚象征钱币的大型圆盘衔接建筑四面的基座与主体。作为大量使用在标志建筑上并为其提供卓越保护的材料，威士伯Fluropon氟丽朋涂料无疑是全球知名建筑的首选。蛋壳白和水晶色威士伯Fluropon氟丽朋涂料更为台北101外观增添庄严气息。70% PVDF树脂和陶瓷无机颜料带来的绝佳保色能力另Fluropon氟丽朋涂料备受青睐。



Tokyo Dome

TOKYO, JAPAN

Tokyo Dome is the world's largest roofed stadium. Constructed from a flexible membrane mounted on a metal armature and anchored to a concrete base, the Tokyo Dome is 503,267 square-feet and approximately six stories high, seating 46,000 for baseball and up to 70,000 for concerts. The Tokyo Domes' metal components were coated with Valspar's Fluropon in the color White. Acclaimed for its durability and resistance to environmental effects, the Fluropon coating has served the revered Tokyo Dome well by upholding its true color and performance standards for years.

东京巨蛋，日本东京

东京巨蛋是世界上最大的有顶体育场。该建筑采用金属结构，屋顶使用弹性薄膜并锚固在混凝土基座上，总面积达4.8万平方米，约六层楼高，可举行容纳46000人的棒球赛事和最多容纳70000人的音乐会。东京巨蛋上的金属结构均使用白色威士伯Fluropon氟丽朋涂料。多年来，因优异的耐久性和抗环境因素侵蚀能力而广受好评的Fluropon氟丽朋涂料不负期望，始终保持着巨蛋本来的颜色和性能。



Marina 1

DUBAI, UNITED ARAB EMIRATES

Completed in 2003, a soaring cluster of six residential towers named Marina 1 redefines luxury living in Dubai. Marina 1 is a mixed-use, pedestrian friendly, 1100-unit complex that encompasses a marina waterway and promenade. Architecturally striking, the Marina 1 towers possess unique but related facades, and their stepped-back profiles recall design elements of Arabic culture. To visually enhance these details, Valspar's Fluropon extrusion coating was applied to metal building components within each structure adding to the tower's powerful mystique.

迪拜海滨城一期，阿联酋迪拜

迪拜海滨城由六座直耸云天的塔式高层住宅组成，于2003年完工，它的出现赋予迪拜奢华生活新的诠释。海滨城一期是建有1100套公寓和海滨水道及漫步长廊的综合体，可供行人散步。六座大厦拥有外观各异但又相互关联的建筑表面，纵向呈梯级式变化，设计中体现了阿拉伯文化的独特元素。为了进一步凸显这细节，每座大厦内的金属结构均涂覆了威士伯公司的Fluropon氟丽朋型材涂料，为建筑增添了强烈的神秘感。



930 Poydras Residential Tower

NEW ORLEANS, LOUISIANA, USA

The French Quarter in New Orleans is one of the most historic and famous downtown neighborhoods in America. In 2010, Brian Gibbs Development teamed up with architects from Eskew+Dumez+Ripple to bring the 930 Poydras Residential Tower to life. Constructed as a paragon of modern design and community focus, the 21-story tower features highly articulated metal paneling painted in Valspar Fluropon coating in Blue Gray. The metal panels cover the building in an asymmetrical pattern and bracket long, narrow windows that contribute to the building's contemporary façade. With its high-durability and luminous color adhesion, Valspar's Fluropon coating provides 930 Poydras with a functioning aesthetic.

普瓦德拉街930号塔楼，美国路易斯安那州新奥尔良

新奥尔良法国区是美国最古老、也是最著名的市中心街区。2010年，Brian Gibbs Development公司联合Eskew+Dumez+Ripple的建筑师重建了普瓦德拉街930号塔楼。作为现代设计和社区理念的典范，这座21层高的住宅楼采用了铰接式金属嵌板，嵌板使用蓝灰色的威士伯Fluropon氟丽朋涂料，以一种非对称式布局环绕于建筑的外立面上，狭长的玻璃窗包覆其中，两者交相辉映，使建筑的立面极具现代感。威士伯Fluropon氟丽朋涂料凭借其优异的耐久性和保光保色性，将930号塔楼的功能美学彰显得淋漓尽致。



Absolute

MISSISSAUGUA, ONTARIO, CANADA

In the Toronto suburb of Mississauga, developers Fernbrook Homes and Cityzen Development Group sought to create a one of a kind project. The developers decided to hold an international architecture competition leading them to Beijing-based MAD Architects' Ma Yansong. Ma's design called for a 56-story glass, concrete and steel tower with a curvilinear shape, completely different from a typical boxy high-rises. Construction was a challenge, requiring rotation of the floor plates for each floor. To add to the curve appeal of the building, architects chose Valspar Acrodize coating in Pewter. This specially formulated 50% PVDF coating provides outstanding resistance to chalking and fading, with heavy-duty durability.

梦露大厦, 加拿大安大略省米西索加

在多伦多郊区的密西沙加市，两家开发商Fernbrook Homes和Cityzen Development Group打算打造一个独一无二的项目。为此，一次国际建筑设计竞赛酝酿而生，正是这场竞赛使开发商们发现了北京MAD建筑事务所的马岩松，他设计的大厦高56层，采用玻璃和钢筋混凝土组合结构，最为特别的是，大厦的外形呈扭曲状，完全打破了传统高层建筑四四方方的常规形态。这种非常规的设计对建筑施工而言是一个不小的挑战，因其要求每一层楼的楼板都要旋转。同时，为突出建筑曲线流畅的魅力，建筑师选择了青灰色的威士伯Acrodize涂料。这种采用特殊配方的50% PVDF涂料具有卓越的耐粉化性和耐褪色性，耐久性能也非常高。



Alfond Inn

ROLLINS, FLORIDA, USA

Located 20 miles from Walt Disney World, it's no wonder the Alfond Inn gives off an air of wonder. Constructed in 2013 for Rollins College and designed by Baker Barrios Architects, the Alfond Inn captures the feeling of a Mediterranean palace, with its defining feature known as the "jeweled center" – a luxurious domed skylight that spans 39 feet across the main lounge. To construct the striking copula, Lintec installed large glass panels framed with aluminum, coated in Valspar Fluropon Classic II in Bronze. Known for its effervescent pigment, Fluropon also provides superior resistance to ultraviolet rays, making for a lasting impression.

阿尔冯德酒店, 美国佛罗里达州罗林斯

阿尔冯德酒店与华特迪斯尼乐园仅32千米之遥, 也延续了处处奇妙独特的味道。阿尔冯德酒店由Baker Barrios设计公司设计, 为罗林斯学院而建造并于2013年落成。著名的“宝石之心”-一个极度奢华的穹顶天窗横跨中庭大厅12米赋予酒店浓郁的地中海宫殿风格。为建造这座引人注目的穹顶, 日本琳得科株式会社在铝框内安装了大型的玻璃嵌板, 并使用青铜色的威士伯Fluropon Classic II珠光系涂料。Fluropon氟丽朋涂料不仅色彩持久绚丽, 还具有优异的抗紫外线功能, 可持久保持建筑的外观。



Altara Center

HONDURAS

Developers in Honduras are creating spaces that take advantage of the country's convenient location and talented bilingual workforce. The Altia Business Park in San Pedro Sula, Honduras is designed to give businesses more than just office space; it also includes a university campus, hotel, and sports facility. Architect Gerardo Lopez was after a specific color that he was not able to find on the market. Valspar developed a custom color in their Valflon coil coating, Prismatic Purple. Valflon coatings are durable FEVE fluoropolymer based resins, creating a distinguished appearance without sacrificing performance. Providing excellent adhesion properties, the coating also has an exceptional resistance to air-borne chemicals.

阿尔特拉购物中心, 洪都拉斯

得益于洪都拉斯优越的地理位置和两种通用语言开发商们正积极投身当地的项目开发。位于洪都拉斯圣佩德罗苏拉市的阿而提亚商业园(Altia Business Park)不仅仅为企业提供办公空间, 园区内还设有大学校园、酒店和体育设施。建筑师杰拉多·洛佩兹(Gerardo Lopez)希望为该项目寻求一种特别的色彩概念, 但当时现有颜色均不理想。为此, 威士伯专为其定制开发了棱彩紫色的Valflon卷材涂料。Valflon涂料使用耐久型FEVE含氟聚合物树脂, 既能让建筑呈现别具一格的外观, 又不会降低性能。而且, 它具有优异的附着性, 对空气中的化学物质也有着非同一般的耐受性。



Aria Resort & Casino

LAS VEGAS, NEVADA, USA

Las Vegas is all about sparkle and limelight, so when developers set out to build the luxurious ARIA Resort & Casino in the CityCenter, they wanted to make sure it would shine brightly along the Vegas skyline. With that in mind, the 61-story, 4,004-room gaming resort was adorned with Valspar's Fluropon SR coatings in Tower White and Special White. Fluropon SR coatings are designed to meet ENERGY STAR® performance requirements, in addition to many local, regional and federal Green Design (LEED® and CRRC) requirements which helped ARIA to become the largest hotel in the world to be LEED Gold certified.

艾丽亚娱乐度假酒店，美国内华达州拉斯维加斯

拉斯维加斯是一个永远闪耀并且充满聚光灯的城市。当设计师想要在市中心建造奢华的艾丽亚度假酒店时，他们希望酒店会在拉斯维加斯天际闪耀光芒。在考虑闪耀设计的同时，设计师也兼顾建筑的可持续性。这栋61层高、拥有4004个房间的博彩度假村使用了塔白和极白威士伯氟丽朋热反射涂料。艾丽亚酒店整体结构超过11.33万平方米的建筑幕墙、48千米大小不一的遮光蓬和830千米的辅助结构一共使用塔白氟丽朋热反射涂料13259加仑。另外，1850加仑的极白氟丽朋热反射涂料被用于超过7060平方米的酒店屋顶瓦楞结构。氟丽朋热反射涂料达到Energy Star®性能要求，并同时达到绿色设计标准(LEED®和CRRC)，这使艾丽亚成为世界上最大的获得LEED金牌认证的酒店。



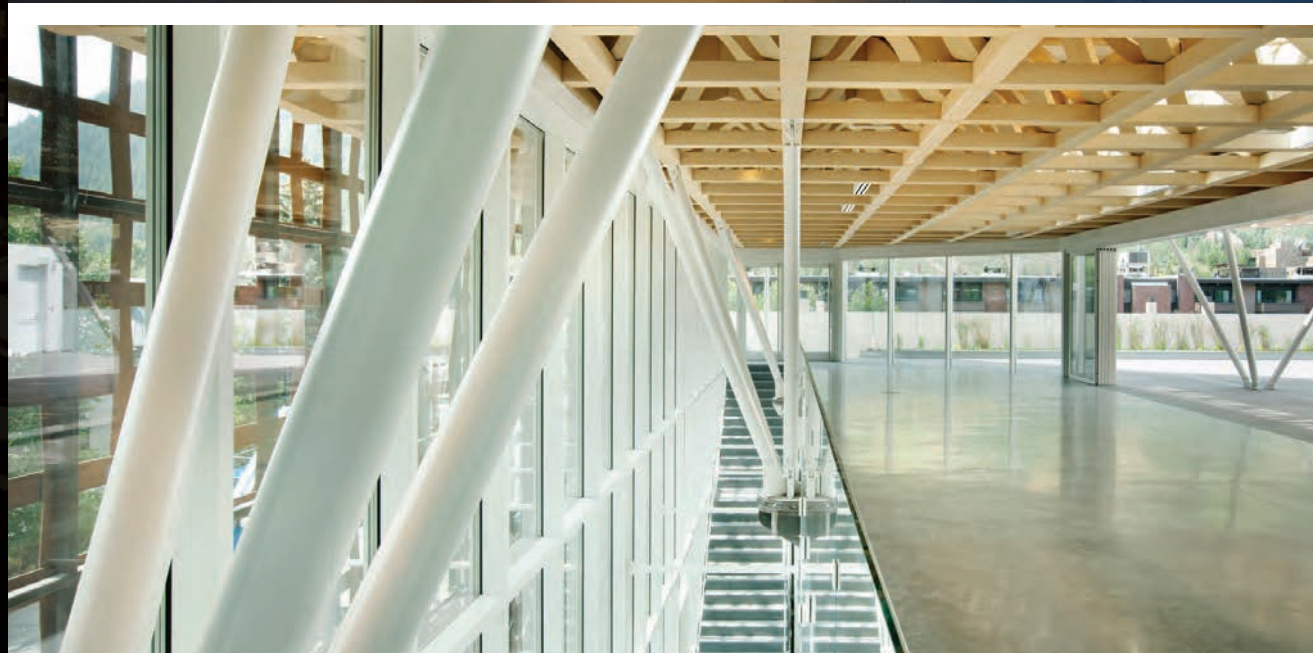
Aspen Art Museum

ASPEN, COLORADO, USA

Aspen, Colorado, recently invested \$45 million into their new art museum. Featuring an iconic, composite geometric screen that drapes the museum's bright glass and white metal exterior on two sides, the new Aspen Art Museum facility was completed in August 2014. Linetec finished the aluminum-framed curtainwall, windows, sliding door and skylight systems in Pure White. Using Valspar's Fluropon®, Linetec matched and blended the 70 percent polyvinylidene fluoride (PVDF) coating in-house to provide a consistent appearance across multiple products and manufacturers. Valspar's Fluropon coatings are among the most weather-resistant of all finishes and meet the most demanding exterior architectural specifications.

阿斯彭艺术博物馆, 美国科罗拉多州阿斯彭

科罗拉多州阿斯彭为建造其新的艺术博物馆投资了4500万美元。2014年8月, 全新的阿斯彭艺术博物馆终于落成, 该建筑外围采用形象的复合几何结构幕墙, 内围是玻璃窗, 两侧采用多种建筑金属材料做成白色外墙。Linetec公司将博物馆的铝框幕墙、窗户、推拉门和天窗均涂成了纯白色。为了确保不同制造商提供的不同材料基材在涂覆后均呈现一致的外观, Linetec利用威士伯Fluropon®氟丽朋涂料做了颜色匹配。作为所有产品中耐候性能最优异的涂料之一, 威士伯公司的Fluropon氟丽朋涂料符合最严苛的外墙建筑规范。



ASU Walter Cronkite

PHOENIX, ARIZONA, USA

Completed in 2008, the Walter Cronkite School of Journalism & Mass Communication at Arizona State University cuts a striking figure in downtown Phoenix. At six stories and 223,000 square feet, the building's boxy exterior is brought to life with metal panels covered with Valspar's Fluropon coating in Colonial Red, Terra Cotta and Copper Penny. Fluropon is Valspar's flagship PVDF metal coating product that offers exceptional color retention due to its resistance to ultraviolet rays prevalent in Arizona's desert environment. In addition to the desert-inspired colors, another section of the building is clad in Metallic Silver with a horizontal rib, adding visual interest.

亚利桑那州立大学沃尔特·克朗凯特 新闻与大众传播学院, 美国亚利桑那州凤凰城

位于凤凰城市中心的亚利桑那州立大学沃尔特·克朗凯特新闻与大众传播学院建成于2008年。学院6层占地20700平方米，整栋建筑方正的外观由于使用了威士伯氟丽朋克罗尼亚红、赤陶褐以及金铜涂料而充满了活力。Fluropon®氟丽朋是威士伯公司PVDF金属表面涂料的旗舰产品，具有出色的保色性。该涂料中含有的紫外线反射功能使其适应亚利桑那州的沙漠环境。应用在可循环金属基材上的氟丽朋涂料体系有效地帮助降低建筑冷却成本，令沃尔特·克朗凯特学院获得LEED银牌认证。



Central Arizona College Maricopa Campus

MARICOPA, ARIZONA, USA

When architects set out to develop Central Arizona College's Maricopa Campus they wanted to deliver a sustainable design that complimented its location and the Native American heritage of the community. To ensure the unique appearance, architects enlisted Valspar's Fluropon coating in Cor-Ten AZP. This coating achieves the look of Cor-Ten Steel through a two-step process using a print effect Fluropon coating. First, a colored base coat is adorned to paneling followed by ink that is applied in a pattern to create the unique effect. Containing 70% PVDF resins, the coating provides protection against weathering along with exceptional color retention to preserve the beautiful aesthetic for years to come.

中央亚利桑那大学马里科帕校区

美国亚利桑那州马里科帕

在开始设计中央亚利桑那大学马里科帕校区时，建筑师们想传达的是一个能凸显校区地理位置和美国原住民社区传统的可持续理念。为了打造独特的外形，建筑师选用了威士伯Fluropon涂料使用在Cor-Ten AZP耐候钢上。为了获得Cor-Ten耐候钢的外观，在使用具有印刷效果的Fluropon氟丽朋涂料时，采用了特殊的涂覆方式。先在建筑嵌板上涂一层彩色底漆，然后按特定模式涂覆油墨，最终营造出独特的视觉效果。涂料含有70% PVDF树脂，能提供强大的耐老化保护，并具有优异的保色性，保证建筑的美丽外观在未来多年内仍得以保持。



Chaffin Junior High School

FORK SMITH, ARKANSAS, USA

The Valspar Corporation received the Metal Construction Association Chairman's Award in 2014 for its contribution to the colorful renovation and addition to Chaffin Junior High School in Arkansas. Recognized for innovation, creativity, and showcasing how metal products help achieve exceptional building designs, the project features metal wall panels and accents finished in Valspar's Fluropon coating. Unchanged since 1969, Chaffin Junior High School was in need of a renovation to continue serving its growing community. Matching the school's colors, Valspar coatings define the entrance as the aluminum tube "baguette" system was coated in Gold Watch, Harvest Gold Seawolf, Coronado Red and Dark Green.

查芬中学, 美国阿肯色州史密斯堡

威士伯公司凭借其在阿肯色州查芬中学改扩建项目上的突出贡献荣获了金属结构协会2014年度的“主席奖”。该项目使用了金属墙板和墙面装饰条, 并在其上使用威士伯Fluropon氟丽朋涂料, 这种创新和创造力在向世人展示如何利用金属制品实现卓越建筑设计的同时, 也获得了世人的认可。自1969年以来, 查芬中学在外观上一直保持不变, 如今, 为了能继续服务于日渐庞大的社区, 它亟需进行一次改造。考虑到要与学校本来的颜色相配, 项目选用了手表金、丰收黄、海狼色、科罗纳多红和深绿色的威士伯涂料来装饰入口处的“长棍式”铝管, 为学校打造了一个特别的入口。



CityCenterDC

WASHINGTON, D.C., USA

CityCenterDC offers a transit- and pedestrian-oriented neighborhood experience in downtown Washington, D.C. Serving as one of the largest urban infill projects ever undertaken in the city, this 10-acre, mixed-use development occupies 3.5 city blocks and eight buildings. For the two 11-story office towers, Valspar's Fluropon coating was selected to meet the project's aesthetic, performance and sustainability goals. Two of Valspar's 70 % PVDF resin-based Fluropon coatings, Bright Pewter and Black Buckle, adorn the exterior. Valspar's Fluropon coatings meet or exceed the American Architectural Manufacturers Association's stringent standards, demonstrating reliable performance and contributing to green building criteria and the project's LEED Gold certification.

DC城市中心, 美国华盛顿特区

DC城市中心是华盛顿市区内以提供公交和步行向导的社区体验开发地。作为华盛顿有史以来最大的城市改造项目之一，这个占地4.05万平方米的综合用途开发项目跨越了3.5个街区，包括8座建筑。对于两座11层高的办公大楼，为了满足美学、功能和可持续性要求，项目选择了威士伯的Fluropon氟丽朋涂料。使用在金属建筑外墙的两种色彩分别为亮锡色和带扣黑色，均含70%的PVDF树脂。威士伯的Fluropon氟丽朋系列涂料均满足甚至超过了美国建筑建材生产商协会（AAMA）的严苛标准，不仅性能可靠，更是为项目满足绿色建筑标准和获得LEED金奖认证起到了至关重要的作用。



Dallas Cowboys Stadium

DALLAS, TEXAS, USA

When the owners of the Dallas Cowboys set out to invest in a new home for their iconic team, they studied the finest stadiums, museums and buildings around the world. Now, when fans arrive at Cowboys Stadium, they are greeted by a gleaming, silver exterior made possible, in part, by Valspar. Valspar supplied Cowboy Silver coatings to more than a dozen of its coil and extrusion customers who had a part in constructing the stadium. Using both Fluropon Classic II coil coating and Acrodize extrusion coating, which are recognized for their durability, the stadium will maintain its iconic and opulent appearance for years to come.

达拉斯体育场, 美国德克萨斯州达拉斯

达拉斯牛仔队的老板在斥资为这支彪悍的球队建设新家园时, 曾研究了全世界众多最好的体育场、博物馆和建筑。现在, 一到达牛仔体育场, 首先映入球迷眼帘的便是利用威士伯产品打造的隐约闪烁着微光的银色外墙。在参与建造该体育场的众多威士伯卷材及型材涂料客户中, 有十多家客户都向Valspar采购了牛仔银色涂料。Fluropon Classic II珠光色卷材涂料和Acrodize型材涂料, 凭借已经获得公认的耐久性定将帮助体育场长久维持其标志性的华丽外观。



Detroit Public Safety Headquarters

DETROIT, MICHIGAN, USA

For the city of Detroit, reinvention and renewal are major priorities, but public projects must be planned with a sharp eye on budget and efficient materials. This balance is exemplified by the city's recent work on its Public Safety Headquarters. Architects chose to build with metal panels, which are coated in Valspar's renowned Fluorpon coil coating. The result features a mosaic of intertwining blue-green coated paneling in custom colors Key Largo, Tarryton, Sweet Nothings and Submarine Gray. In addition to its sleek appearance, the coatings offer an outstanding resistance to ultraviolet rays, long-term color retention, and resistance to dirt and stains.

底特律公共安全部，美国密歇根州底特律

对底特律而言，改造和重建是城市建设的主要工作重点，但公共项目的规划必须平衡预算和节能。这一平衡在公共安全部建筑项目上得到了充分体现。建筑师选择采用金属墙板，并在墙板上使用威士伯著名的Fluorpon卷材涂料。最终，整个外墙呈现出以蓝绿色为主调，交错镶嵌着定制基拉戈海滩色、Tarryton色、Sweet Nothings色和潜艇灰色嵌板的效果。除了提供现代化的外观以外，这些涂层还能有效抵抗紫外线，不容易脏污，而且能够长期保色。



Eser Family Home

WOODLAND, CALIFORNIA, USA

The Eser family in California had a few things in mind as they set out to construct their new home: build with metal, be a net-zero house and have a modern appearance. To tackle the modern appearance, Valspar provided Fluropon Kameleon coatings – pearlescent paints that appear to shift in color based on the lighting or viewing angle – in Dusty Rose. The coating was applied in a three-coat system resulting in a highly durable end product that offers amazing color retention and protection against the elements for a finish that will last. The couple also chose Valspar's Fluropon coating in Surrey Beige for the home's roof, which adds solar reflectivity and contributes to the home's energy efficiency.



Eser之家, 美国加利福尼亚州伍德兰

来自加州的一对房主夫妇在为自己建立新家时，希望将来的新家满足以下几个条件：金属构造、净零能耗，且拥有现代化的外观，他们选用了灰玫瑰色的威士伯Kameleon变色龙涂料，这是一种珠光色涂料，颜色会随着光照或视角的变化而发生改变。该体系由三道涂料涂覆而成，最终形成高度耐用的涂层表面。另外，这对夫妇还选用了萨里郡米色的威士伯Fluropon氟丽朋涂料来装饰屋顶，增大太阳光反射，进一步提高房屋的能源效率。



Exploration Tower at Port Canaveral

CAPE CANAVERAL, FLORIDA, USA

The welcome center for Florida's Exploration Tower at Port Canaveral was the first building to feature Valspar's Fluropon Kameleon Color coating, giving the effect of a shimmering, iridescent exterior. Architects selected Valspar's Blue Pearl II Kameleon Color coating to capture the themes of revitalization and change. Fluropon Kameleon Color coatings offer the same, advanced protection known with 70% PVDF resin based products. In addition to the Blue Pearl II finish, a custom BNX White Lumiflon® FEVE fluoropolymer resin based Valflon coating was applied to ALPOLIC materials across the building including the fourth floor observation deck/canopy, stair towers and elevator bump-out, among other features.

探索塔, 美国佛罗里达州卡纳维拉尔港

位于佛罗里达州卡纳维拉尔港的迎客中心-探索塔是首个使用威士伯Kameleon变色涂料的建筑，塔身闪烁彩虹般光泽。为了呈现复苏和改变的主题，设计师选择了威士伯蓝珍珠II号Kameleon变色涂料。Kameleon变色涂料能提供强大的保护作用，其保护效果与含70% PVDF树脂的威士伯Fluropon氟丽朋涂料相同。除了蓝珍珠II号面漆以外，该项目还使用了定制BNX白色Lumiflon®FEVE氟聚合物树脂的Valflon涂料来涂覆整个建筑的ALPOLIC材料，包括四楼的观景台、天篷、楼梯间和电梯凸出部位等。



Formosa 1140

WEST HOLLYWOOD, CALIFORNIA, USA

Formosa 1140, a West Hollywood multifamily housing unit, was completed in 2008. The 16,000-square-foot building cuts a striking figure in its neighborhood with its red corrugated metal exterior. Using Valspar's 70% PVDF Fluoropon coating, a custom set of colors –Coronado Red and Raucous Orange—not only highlight the texture and pattern of the 12,900 square-feet of exterior perforated T16-E panels, but also contrasted with the green shades of the park. Tested under extreme conditions, Valspar's PVDF resin-based coatings are proven to resist humidity, fading, chalking, abrasions and chemicals, while retaining the intended color, gloss and appearance.

福摩萨1140, 美国加利福尼亚州西好莱坞

福摩萨1140公寓是西好莱坞的一个集合住宅项目，于2008年建成。公寓建筑面积为1500平方米，红色瓦楞状的独特金属外墙是社区的新一象征。通过科罗纳多红和砂砾橙的独特颜色组合，威士伯的70% PVDF Fluoropon 氟碳涂料不仅凸显了1200平方米穿孔T16-E外墙板的纹理和图案，也与停车场的绿色相得益彰。各种极端条件测试证明，威士伯公司PVDF 氟碳涂料具有优异的防潮、耐褪色、耐粉化、耐磨损和耐化学物质性能，同时能长期保色保光，使建筑物外观恒久如新。



GM Renaissance Center

DETROIT, MICHIGAN, USA

Bridging the gap between Ambassador and MacArthur Bridges, the Renaissance Center opened in 1977 and became a “city within a city,” composed of four business towers and the colossal Westin Hotel, the tallest hotel in the world at that time. Designed by architect John Portman, the Renaissance towers feature beautiful exteriors of glass curtain walls with metal building components coated in Valspar's Fluropon. The high performing, 70% PVDF architectural coating has helped preserve the building's stunning façade for almost 50 years, which included the 1996 redesign, when General Motors purchased the complex and renamed the facility the GM Renaissance Center.

通用文艺复兴中心，美国密歇根州底特律

于1977年起用的通用文艺复兴中心坐落在大使桥和麦克阿瑟大桥之间，由四座办公大楼和当时全球最高的威斯汀酒店组成，被人们称为“城中之城”。项目出自建筑师约翰·波特曼之手，漂亮的玻璃幕墙外观是其一大亮点，金属建筑结构均使用威士伯Fluropon氟丽朋涂料。这一建筑综合体于1977年开放，1996年为通用汽车买下更名为“通用文艺复兴中心”并重新设计规划，历经40年洗礼，时至今日，氟丽朋70% PVDF涂料依然保护中心外观令其辉煌如往昔。



Godfrey Hotel

CHICAGO, ILLINOIS, USA

Located in downtown Chicago, the Godfrey Hotel comprises 16 stories and 221 rooms, and is insulated by 60,000 square-feet of Metl-Span CFA Architectural Wall-Panels. The panels are coated in Valspar's Fluropon in Embossed Silver, providing long-term color retention and outstanding resistance to ultraviolet rays, dirt and stains, which will help prevent the hotel from ever resuming its previous "Mummy" form. Standing tall between downtown Chicago and the lakefront of Lincoln Park, the Godfrey Hotel finally opened its doors to the public in February of 2014.

戈弗雷酒店，美国伊利诺斯州芝加哥

戈弗雷酒店地处芝加哥市中心，共16层高，拥有221间客房，安装了5570平方米的Metl-Span CFA建筑隔热墙板。这些墙板均使用了浮雕银色威士伯Fluropon氟丽朋涂料，凭借着优异的保色性以及抗紫外线和耐脏污性能，Fluropon威士伯涂料帮助酒店长久保持华丽外观，从前的“木乃伊”形象已然退出人们视线。这座矗立在芝加哥市中心与林肯公园湖畔之间的戈弗雷酒店于2014年2月正式向公众开放。



Guthrie Theater

MINNEAPOLIS, MINNESOTA, USA

With the bank of the Mississippi providing its stage, the Guthrie Theatre is every bit as bold and beautiful as the art that's performed within. The theatre features a large rotunda, which houses its iconic stage and a jutting, 53 meter cantilever. Developed specifically for the Guthrie, Valspar created a custom color of Valflon coil coating – Guthrie Blue – to be used on the project. Architects selected Valflon for its exceptional color consistency, retention and incredible high-gloss capabilities, which provide an unmistakable depth and sheen to the Guthrie Blue coating on the theater's striking exterior.

古瑟里剧院, 美国明尼苏达州明尼阿波利斯

古瑟里剧院坐落在密西西比河的河岸上，以河流为依托，其设计理念与剧院内每日上演的艺术一样大胆而美丽。剧院外观是一个大型的圆型建筑，其内囊括标志性剧场舞台和一个长53米的突出悬臂。该项目使用威士伯专为古瑟里剧院定制开发的“古瑟里蓝”色Valflon卷材涂料。建筑师看中了Valflon涂料优异的保色保光能力和色彩一致性，能为剧院外墙的古瑟里蓝涂层提供浑然天成的厚重感和光泽。



Judson University

ELGIN, ILLINOIS, USA

Judson University in Elgin, Illinois, recently experienced some enviable challenges: continuous growth in its fledging architectural and design program created a need for more classroom, meeting and office spaces. The new structure features exterior metal panels coated in Valspar's signature Fluropon coating in Copper Penny, while the roof panels are coated in an Ash Gray Fluropon. Valspar's coatings were selected for their durability and gloss retention, and also for their high solar reflectivity and emissivity as well. The coatings played a key role in creating a cool metal roof, reducing the building's energy consumption and earning a Gold LEED Rating.

贾德森大学韦伯学术中心, 美国伊利诺斯州埃尔金

最近, 位于美国伊利诺斯州埃尔金的贾德森大学遇到了让人艳羡的挑战: 新建筑项目 and 设计项目的持续增多使得学校不得不建造更多的教室、会议和办公空间。这座新建筑体的特点是: 外墙采用金属墙板并采用著名的古典铜色威士伯Fluropon氟丽朋涂料, 而屋顶板则使用灰白色Fluropon氟丽朋涂料。选择威士伯涂料的原因是它具有优异的耐久性和保光性, 且涂料对阳光的反射率和热散发率非常高, 形成“冷金属屋顶”。并降低了建筑能耗, 帮助该项目获得LEED金奖认证。



JW Marriot

AUSTIN, TEXAS, USA

Weathered steel is a popular architectural material thanks to its rich, mottled appearance, but it comes at a high price. In search of a more affordable option, Valspar was brought in to help achieve the desired aesthetic. In total, 40,000 square-feet of 18-gauge Galvalume steel coil was coated with Valspar's Classic II Fluropon in a custom color combination of Barrel Brown, Fudge and Mustang. Additionally, Valspar's Fluropon Classic II in Bright Silver was used to accent the glass curtain-wall. The coating will maintain its look for years to come, as Fluropon is known for its durability, exceptional color retention, and resistance to chalking and chemical degradation.

万豪酒店，美国德克萨斯州奥斯丁

耐候钢因为颜色丰富、色彩斑斓而成为当今广为流行的建筑材料，但它的缺点在于成本较高。于是酒店设计师们开始寻找价格更为实惠的替代材料，威士伯公司帮助他们实现了创造期望的美感。最终，共3720平方米的18号镀铝锌钢卷板采用定制的威士伯桶棕色、软糖色和野马色Fluropon Classic II 涂料组合被用于该项目。此外，玻璃幕墙还使用了亮银色的威士伯Fluropon Classic II 涂料。Fluropon 氟丽朋涂料以其优异的耐久性、保色性、耐粉化性和抗化学降解性能著称，多年后的酒店的外观仍持久亮丽如新。



Maple Grove Hospital

MAPLE GROVE, MINNESOTA, USA

Developed through a joint partnership between Fairview Health Services and North Memorial Health Care, Maple Grove Hospital opened the doors to its 301,000 square foot facility in the winter of 2009. Defined by its visually captivating metal exterior, the new hospital is a combination of creative design and modern technology. To achieve the facility's distinctive appearance, BWBR Architects commissioned Linitec to finish exterior metal canopies, column covers, and panels by AMERICLAD products and Quality Metalcrafts in Valspar's Fluropon Classic II mica coating. The building color palette was selected to complement the changing leaf colors of the surrounding tree grove, the Fluropon coating also provides Maple Grove Hospital with long-lasting color retention and extreme weathering performance, necessary to withstand the harsh conditions of a Minnesota winter.

枫树林医院，美国明尼苏达州枫树林

枫树林医院由明尼苏达州的费尔维健康服务中心和North Memorial保健机构合作建设，总面积达2.8万平方米，2009年冬季正式投入使用。新医院展现了创意设计和现代技术的完美结合，在外观使用引人注目的独特金属外墙。为打造独特外形，BWBR建筑师事务所委托Linitec将威士伯Fluropon Classic II云母系涂料用于Quality Metalcrafts AMERICLAD提供的外部金属顶篷、柱盖板以及嵌板。Fluropon氟丽朋涂料与围绕在医院建筑外四季变换的枫叶色彩交相辉映，其持久的保色性和耐极端气候的性能更保护医院抵抗明尼苏达州严酷的冬季。



Nu Skin Innovation Center

PROVO, UTAH, USA

As aesthetically satisfying as it is environmentally friendly, the 10-acre Nu Skin Innovation Center houses research laboratories, conference spaces, a data center, executive offices, retail opportunities and two cafés. The Innovation Center's well-scaled spaces offer inviting views of Provo, but its glass and steel curtain wall construction also makes interior spaces vulnerable to Utah's intense sunlight, a problem mitigated, in part, by discreet sunshades positioned along the south elevations. Additionally, Nu Skin's use of both Valspar's coil and extrusion Fluropon architectural coating ward off environmental damage. Both the coil and extrusion coatings were applied in Gatwick Silver to the curtain wall mullions and architectural wall panels from Centria. The highly durable Fluropon 70% PVDF coating guarantees superb anti-aging properties, a feature perfectly in line with the 22,000 square-foot Nu Skin Center for Anti-Aging Research.

如新创新中心, 美国犹他州普罗澳

如新(NUSKIN)创新中心占地面积4万平方米, 设有研究实验室、会议空间、数据中心、行政办公室、零售区以及两间咖啡馆, 整个项目既环保又美轮美奂。创新中心内各个空间的规模设计适中, 可尽览普罗沃迷人景致, 通过沿南立面安装遮阳板使中心的玻璃和钢结构幕墙内部空间免遭犹他州强烈的阳光照射。除此之外, 如新还借助威士伯 Fluropon 氟丽朋卷材和型材涂料来抵抗各种环境因素的侵扰。幕墙窗棂和盛亚墙面板均使用氟丽朋盖特威克银色卷材和型材涂料。高耐候的Fluropon 氟丽朋70% PVDF 氟碳涂料为创新中心提供一流的抗老化能力, 与面积达2040平方米的Nu Skin抗衰老研究中心完美契合。



Salt Lake City Public Safety Building

SALT LAKE CITY, UTAH, USA

Created to house the city's police department, fire department, and emergency dispatchers, the Salt Lake City Public Safety Building (PSB) is a 174,000 square-foot, net-zero energy facility, meaning it creates as much energy as it uses. Much of the PSB's energy efficiency is achieved through its extensive use of windows and daylighting to reduce the need for electrical lighting indoors. A massive curtainwall on the building's northwest side, along with engineered interior light shelves and exterior sunshade, all feature Valspar's Fluropon Classic II coating in MC Platinum, adding a pearlescent finish to the project. Furthermore, LCG Facades fabricated and installed the building's fascia and soffit system that included ALPOLIC 4mm FR core panels finished with 2-coat Valspar Valflon FEVE in Mica Platinum.

盐湖城公安大厦，美国犹他州盐湖城

作为容纳市警察厅、消防署和紧急调度中心的建筑，盐湖城公安大厦(PSB)的建筑面积共1.6万平方米，是一座零能源消耗的建筑，换言之，建筑本身供应的能源可维持自身正常运转需要。达到公安大厦如此高能效的主要原因是广泛使用了窗户和日光照明，以此减少室内电气照明的需要。建筑西北侧的大幅幕墙以及室内导光板和室外遮阳板均使用云母铂色的威士伯Fluropon Classic II涂料，为整个建筑蒙上了珍珠光泽。另外，由LCG Facades公司制造和安装的建筑拱腹及横带系统中的雅保丽固4mm的防火板也涂覆有两涂云母铂色的Valspar Valflon FEVE涂料体系。



W Hotel

DALLAS, TEXAS, USA

The W Dallas-Victory Hotel and Residences is the centerpiece of Dallas' 72-acre downtown Victory master plan. Designed by HKS architects, the 33-story W Dallas features 252 luxury hotel rooms, 144 condominiums and high-end shops. The \$70 million W Dallas complex is recognized for its progressive wedge-shaped design whose structure is a dynamic recipe of pre-cast concrete, a curtain wall glazing system with distinctive metal panels, and a rich limestone base for enhanced curb appeal. Integrated into the curtain wall system, the metal panels appear as a white horizontal band. To ensure an aesthetic punch from all vantage points and to ward off ill effects from the unrelenting Texas sun, the panels were coated with Valspar's high performing Fluropon 70% PVDF architectural coating in Bone White.

W酒店，美国德克萨斯州达拉斯

东京巨蛋是世界上最大的有顶体育场。该建筑采用金属结构，屋顶使用弹性薄膜并锚固在混凝土基座上，总面积达4.8万平方米，约六层楼高，可举行容纳46000人的棒球赛事和最多容纳70000人的音乐会。东京巨蛋上的金属结构均使用白色威士伯Fluropon氟丽朋涂料。多年来，因优异的耐久性和抗环境因素侵蚀能力而广受好评的Fluropon氟丽朋涂料不负期望，始终保持着巨蛋本来的颜色和性能。



Trump International Hotel

LAS VEGAS, NEVADA, USA

When The Trump Organization decided to bring the legendary hotel chain to Las Vegas in 2008, it was no surprise that the new venue would exude luxury. Architectural firm Bergman Walls & Associates Ltd. was hired to create an unforgettable structure at the north end of the infamous Las Vegas strip. The architect decided to build with glass and metal, landing on an exterior that boasts a 495,000 square-foot curtain wall that incases the entire building. To give the curtain wall a one-of-a-kind look, Viracon, Inc. was commissioned to fabricate a glowing 24-karat gold glass coating. To accent the radiance of the gold windows and to protect the façade, architects turned to Valspar to furnish the Fluropon coating that covered the curtain wall's aluminum fins and mullions in a brilliant white color.

特朗普国际酒店，美国内华达州拉斯维加斯

2008年，当特朗普集团决心将充满传奇色彩的连锁酒店引入拉斯维加斯时，就注定了这座新酒店会极尽奢华。新酒店位于赌城拉斯维加斯的北边，集团聘请伯格曼墙面建筑设计及其合作公司负责设计，希望打造一栋令人难忘的建筑。建筑师最终决定采用玻璃和金属材料，整个建筑外立面安装有面积达4.6万平方米的幕墙。为使幕墙呈现独一无二的外观，Viracon幕墙建设使用光彩夺目的24K金色玻璃涂料。为凸显镀金窗面的耀眼金光并保护建筑，建筑师将威士伯亮白色Fluropon氟丽朋涂料用于幕墙结构。



Watergate Complex

WASHINGTON, D.C., USA

Built between 1963 and 1971, the six buildings of the Watergate Complex remain premier locations in Washington D.C. for office and living space. Stretching across the waterfront of the Potomac River, the Watergate Complex was commissioned by the Italian real estate company Societa Generale Immobiliare, and designed by revered architect Luigi Moretti. Progressive and modern for its time, the Watergate Complex still retains its original and iconic brilliance thanks in part to the Valspar Fluropon coating that skins the exterior of the Watergate Complex. The Fluropon coating has preserved the historic building for more than 40 years, seeing it through both physical and political stress.

水门大厦，美国华盛顿特区

水门大厦包括六栋建筑，建于1963年到1971年间，时至今日仍是华盛顿特区内首屈一指的办公和住宅综合体。水门大厦矗立在波托马克河畔，由意大利房地产公司Societa Generale Immobiliare开发，著名建筑师路易吉·莫雷蒂(Luigi Moretti)设计。在建造时就已体现革新和现代理念的水门大厦目前仍不减当年的雄伟辉煌，威士伯Fluropon氟丽朋涂料为这座具有历史意义的综合建筑提供了40多年的卓越保护，是其通过自然考验的忠实见证者。



Wells Fargo Center

MIAMI, FLORIDA, USA

Signifying the height of luxury in downtown Miami corporate buildings, the Wells Fargo Center is a coveted business address in this acclaimed international city. Completed in 2010, the 47-story tower is part of the Metropolitan Miami complex and is adjacent to the 42-story elite hotel, the JW Marriott Marquis Miami. Awarded LEED Gold certification upon its completion, the Wells Fargo Center comprises over 740,000 square feet of office space for more than 10,000 people. The architecture team chose to coat the metal components within the curtain wall with Valspar's Fluropon architectural coating for its field proven durability and color retention.

富国银行中心，美国佛罗里达州迈阿密

在著名的国际化都市迈阿密，标志着迈阿密写字楼新奢华高度的富国银行中心是大多数人梦寐以求的办公场所。这座47层高的大厦于2010年建成，是“迈阿密大都会”综合开发项目的一部分，紧邻42层高的精品酒店——迈阿密JW万豪侯爵酒店。富国银行中心共拥有74万平方英尺的办公空间，可容纳超过1万人同时办公，在建成时即荣获了LEED金奖认证。设计师选用威士伯Fluropon氟丽朋涂料用于幕墙金属结构。



Global Projects

北京国家体育场（鸟巢）	Beijing National Stadium (Bird's Nest)	北京	2008	深圳市民中心	Shenzhen Civil Center	深圳	2003
北京奥林匹克游泳中心（水立方）	Beijing National Aquatics Center (Water Cube)	北京	2008	杭州市民中心	Hangzhou Civil Center	杭州	2009
首都机场T3航站楼	Beijing Capital Airport - Terminal 3	北京	2007	清华大学美术学院	Academy of Arts & Design , Tsinghua University	北京	
北京威斯汀酒店	The Westin Beijing Chaoyang	北京	2008	苏州国际博览中心	Suzhou International Expo Center	苏州	2012
中国石化科研及办公楼	Sinopec Scientific Research and Office Building	北京	1998	香港科学园停车场大楼	Hong Kong Science Park	香港	2012
国家大剧院	National Centre for the Performing Arts	北京	2012	上海中山医院	Shanghai Zhongshan Hospital	上海	2012
长春西客站	West Changchun Railway Station	长春	2011	上海交大药物楼	Shanghai Jiao Tong University Medical Building	上海	
上海中心	Shanghai Tower	上海	2007	上海市第一人民医院-松江	Shanghai General Hospital	上海	2006
陆家嘴塘东总部基地	Lujiazui Tangdong Headquarters	上海	2010	佛山中医院	Foshan Chinese Medicine Hospital	佛山	2006
浦东金融广场	Pudong Financial Center	上海	2016	北京解放军外科大楼	Beijing Liberation Army Surgery Department	北京	
东方汇经中心	Oriental Financial Center (OFC)	上海	2013	深圳会展中心	Shenzhen Convention & Exhibition Center	深圳	2004
上海国金中心	Shanghai International Finance Centre	上海	2011	深圳福田区人民体育场	Shenzhen Futian People's Stadium	深圳	
上海钻石大厦	Shanghai Diamond Exchange Center	上海	2010	奥运射击馆	The Olympic Games Shooting Range Hall	北京	2008
虹桥火车站二期	Shanghai Hongqiao Railway Station II	上海	2010	上海交大体育馆	Shanghai Jiao Tong University Stadium	上海	2005
花旗银行大厦	Citigroup Tower	上海	2005	奥林匹克水上公园	Olympic Rowing-Canoeing Park	北京	2007
上海国际赛车场	Shanghai International Circuit	上海	2004	鼎园	Shanghai Dingyuan	上海	
汇亚大厦	Azia Center	上海	2005	北京励俊酒店	Beijing Li Jun Hotel	北京	2008
由由国际广场及酒店	You You Grand Sheraton International Plaza	上海	2007	嘉里中心饭店	Beijing Kerry Centre Hotel	北京	1999
南宁龙光世纪大厦	Nanning Logan Century 1 Tower	南宁	2017	北京外交公寓	Beijing Foreign Apartment	北京	
广州白云机场	Guangzhou Baiyun International Airport	广州	2018	南京国际广场	Nanjing International Center	南京	
广州新电视塔	Canton Tower	广州	2010	香港映湾园	Hongkong Bay Garden	香港	
腾讯滨海大厦	Tencent Tower	深圳	2015	香港尖沙咀港景峰	JingGangFeng,Tsim Sha Tsui,HK	香港	
深圳百度大厦	Baidu International Towers	深圳	2015	上海仁恒河滨城	Shanghai Yanlord	上海	2005
深圳华润大厦万象城	Shenzhen MixC	深圳	2004	北京昆仑公寓	Beijing Kunlun Apartment	北京	
香港会展中心	Hong Kong Convention and Exhibition Center	香港	1988	北京欧洲广场	Beijing Europon Plaza	北京	
银河二期	Macau Galaxy City II	澳门	2015	北京漂亮阳光广场	Beijing Pretty Sunshine Square	北京	
澳门梦幻城三期	Macau City of Dreams III	澳门	2017	深圳京武浪琴半岛	Shenzhen Jing Wu Longines Peninsula	深圳	
新濠影汇（新丽门）	Macau Studio City	澳门	2015	深圳航天大厦	Shenzhen Astronautics Building	深圳	2005
澳门梦幻城	Macau City of Dreams	澳门		中国银联（上海）总部	China UnionPay (Shanghai) Headquarters	上海	2002
澳门威尼斯人	Venetian Macao, Cotai Strip	澳门	2007	中国农行数据处理中心	Data Processing Center of China Agricultural Bank	上海	2004
台北101	Taipei 101 Tower	台北	2003	证券大厦	Stock Building	北京	
上海市胸科医院	Shanghai Chest Hospital	上海	2012	国家公安部大楼	Public Security Building	北京	

国家交通部大楼	Ministry of Transport of China	北京	2008	北京慧科大厦	Beijing Huike Building	北京	2005
北京检察院	People's Procuratorate of Beijing	北京		北京新闻出版大厦	Beijing Press Circles Building	北京	
中国商务部大楼	Ministry of Commerce of China	北京	2003	深圳南山天利广场	Shenzhen Tianli Square	深圳	2010
北京民主党派人民团体大楼	Beijing Democratic Party Building	北京	2009	深圳科技园北桑达电子大厦	Sangda Electronics Building	深圳	2001
航天科技大厦	Aerospace Science and Technology Building	北京	2007	深圳金运世纪	Jinyun International Building	深圳	2007
华能大厦	Beijing Huaneng Building	北京	2009	香港中环万宜大厦	Central Wanyi Building HK	香港	
佛山新闻中心	Foshan News Center	佛山	2006	香港北京道一号	1 Peking Road, HK	香港	
中国联通大厦	China Unicom Building	北京		香港数码港一座及二座	Data Port I/II, HK	香港	2000
中国人保办公室	People's Insurance Company	北京		鑫茂大厦-北京金融街	Xinmao Building-Finical Street, Beijing	北京	2007
宁波宁兴财富广场	Ningxing Fortune Square	宁波	2012	上海华为技术有限公司上海基地项目	Huawei Technologies Shanghai Base Project	上海	
上海莱福士广场	Shanghai Raffles City	上海	2004	上海临港新城皇冠假日酒店	Shanghai Lingang New City Crowne Plaza Hotel	上海	2009
飞洲国际	Feizhou International Building	上海	2004	浦江斯派莎克项目	Spriax Sarco Project	上海	2010
企业广场一期以及二期	Enterprise Square	北京		江西奥林匹克体育中心	Jiangxi Olympic Sports Center	南昌	2011
北京莱福士广场	Beijing Raffles City	北京	2009	招商银行上海大厦	China Merchants Bank, Shanghai	上海	
中国皮革城-海宁	China Leather City-Haining	海宁	2005	苏州月亮湾国际中心	Suzhou Moon Bay International Center	苏州	2011
北京万达广场	Wanda Plaza, Beijing	北京	2005	古北国际财富中心	Gubei Fortune Center	上海	2008
中国电子大厦	China Electronic Building	北京	2005	扬州京华城中城	Yangzhou Living City	扬州	2012
北京银泰中心	Beijing Yintai Centre	北京	2008	上虞国际大酒店	Shangyu International Hotel	上虞	2004
广州耀中广场	China Shine Plaza	广州	2007	南昌华龙国际大厦	Nanchang Hualong International Building	南昌	2005
静安中华大厦	China Mansion in Jingan	上海	2005	南昌省政协办公楼	Nanchang provincial CPPCC office building	南昌	
雍和大厦	Yonghe Building	北京	2005	长沙中天广场	Zhongtian Square	长沙	2014
北京第五广场	Minmetals Square	北京	2007	厦门新景中心	Xiamen Xinjing Center	厦门	2010
深圳新世界中心	Shenzhen Newworld Center	深圳	2006	合肥滨湖会展中心	Hefei Binhu Convention and Exhibition Center	合肥	2010
苏州纳米科技园	SIP BioBay	苏州	2007	朝林酒店	Chao Lin Hotel	北京	2010
深圳星河发展中心	Shenzhen Galaxy Development Centre	深圳	2007	哈工大会展宾馆	Haerbin Exhibition Hotel	哈尔滨	
北京财源国际中心	Beijing International Finance Center	北京	2008	哈尔滨新闻中心	Haerbin International Exhibition and Sports Center Complex Building	哈尔滨	2013
香港科学园新科中心	Hong Kong Science Park	香港	2006	首邑溪谷	The first city valley	北京	2012
上海仙乐斯广场	Shanghai CIROS Plaza	上海	2001	昆明机场	Kunming Changshui International Airport	昆明	2012
上海金桥软件园	Jinqiao Software Park	上海	2000	北京佳隆国际大厦	Beijing Jialong International Building	北京	2008
中国气象大厦	China Meteorological Building	北京	2006	东京巨蛋	Tokyo Dome	东京	1984
北京三峡大厦	Beijing Three Gorges Building	北京	2009				
北京华声国家大厦	Beijing Huasheng Building	北京	2004				



valspar

if it matters, we're on it.®